

# INCLASS



## ESCALAS FINISHES BOOK

Fabrics / Leathers / Materials



# BASES

## METAL PARTS

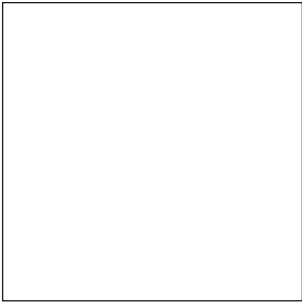
### M1 COLOURS



B00



Aluminum

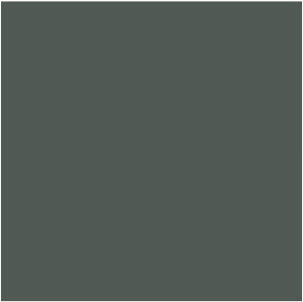


W01

### M2 COLOURS



M56



V92



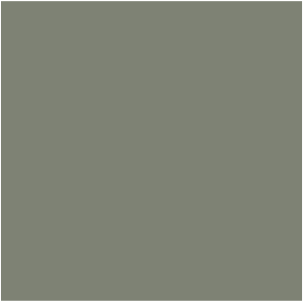
B40



B36



M38



V74



B44



G49



Y62



M44



M82



P70



Rust Brown



Rust Grey



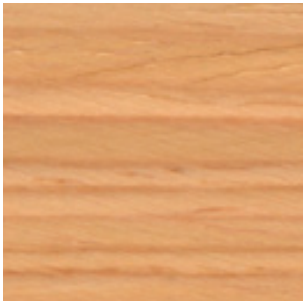
G42

# TABLETOPS

## WOOD VENEER

MDF core with natural wood surface.

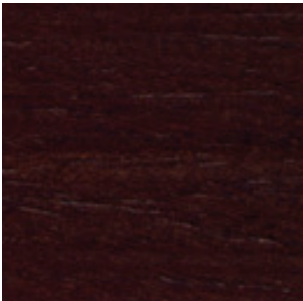
### OAK



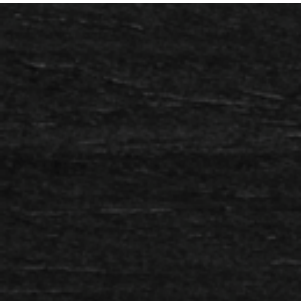
Natural Stain



Walnut Stain



Wenge Stain



Black Stain

### WALNUT



Natural Stain

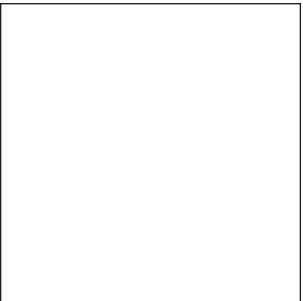
# TABLETOPS

LACQUERED COLOURS

## W1 COLOURS

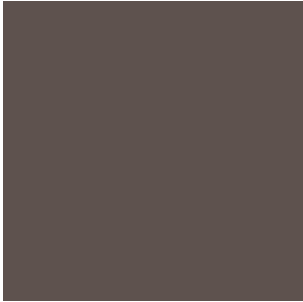


B00

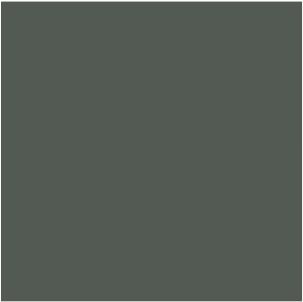


W01

## W2 COLOURS



M56



V92



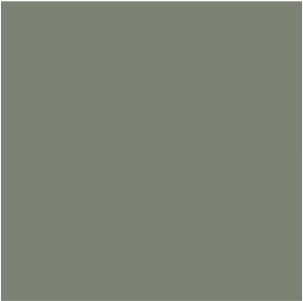
B40



B36



M38



V74



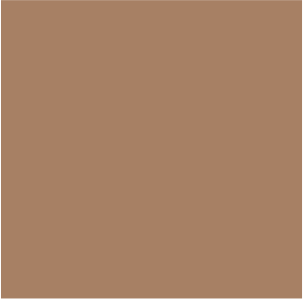
B44



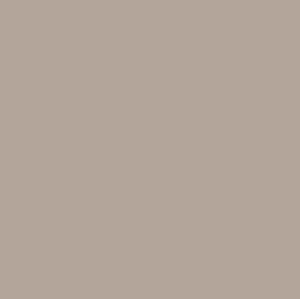
G49



Y62



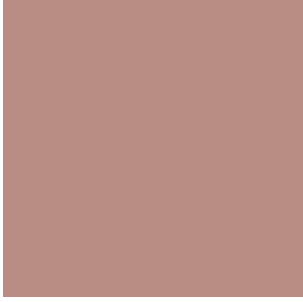
M44



M82



G42



P70



# G2 - JORDAN<sup>NEW</sup>

## TECHNICAL DATA

- Composition:**  
100% polyester.
- Light fastness:**  
5, ISO 105 B02.
- Abrasion:**  
100.000 Martindale EN ISO 12947-1, 2.
- Resistance to pilling:**  
4 - 5, ISO 12945-2.
- Fastness to rubbing:**  
Wet 5.  
Dry 5, ISO 105-X12.
- Tear strength:**  
Warp 180, 2N.  
Weft 174, 3N, EN ISO 13937-3.
- Seam slippage:**  
Warp 1,6N.  
Weft 2,0N, EN ISO 13936-2.
- Tensile strength::**  
Warp 1257N.  
Weft 1189N, EN ISO 13934-1.

**Width:** ±146cm  
**Weight:** ±360gr/m²



\*\*\*Batch to batch variations may occur within commercial tolerances.

Note:

- The real colours and tones of the fabrics may differ from the digital image due to the scan process and the colour calibration of the different screens. Always request real fabric samples before ordering.
- Consult our Fabric and Leather Matrix to know about the availability of this material by product line.





# G2 - NEL <sup>NEW</sup>

## TECHNICAL DATA

- Composition:**  
95% PES, 5% cotton.
- Light fastness:**  
5 - 6, UNE 40187 - BS1006-B2.
- Abrasion:**  
>38.000 Martindale EN ISO 12947-2.
- Resistance to pilling:**  
4 - 5, ISO 12945-1.
- Rubbing fastness in humid state:**  
4 - 5, ISO 105-D01.
- Rubbing solvents:**  
4 - 5, ISO 105-D01.
- Tear strength:**  
Warp 2mm.  
Wet 2,1mm, EN ISO 13937-2.
- Characteristics:**  
Instalimp® treatment.

**Width:** ±140cm  
**Weight:** ±445gr/m²



\*\*\*Batch to batch variations may occur within commercial tolerances.



Note:

- The real colours and tones of the fabrics may differ from the digital image due to the scan process and the colour calibration of the different screens. Always request real fabric samples before ordering.
- Consult our Fabric and Leather Matrix to know about the availability of this material by product line.





# G2 - ARS

## TECHNICAL DATA

- Composition:  
100% polyester.
- Light fastness:  
5, ISO 105 B02, Method 2.
- Abrasion:  
90.000 Martindale EN ISO 12947-2.
- Resistance to pilling:  
4 - 5, ISO 12945-2.
- Rubbing fastness in humid state:  
5, ISO 105-X12.
- Rubbing solvents:  
4 - 5, ISO 105-X12.
- Seam strength:  
Warp 3,7mm.  
Weft 4,0mm, EN ISO 13936-2.
- Seam strength:  
Warp 75,6N.  
Weft 65,1N, EN ISO 13937-3.
- Flammability:  
EN 1021 - 1 (cigarette).
- Environment:  
OEKO-TEX® Standard 100.

Width: 140cm  
Weight: 250gr/m²



\*\*\*Batch to batch variations may occur within commercial tolerances.



Note:

- The real colours and tones of the fabrics may differ from the digital image due to the scan process and the colour calibration of the different screens. Always request real fabric samples before ordering.
- Consult our Fabric and Leather Matrix to know about the availability of this material by product line.



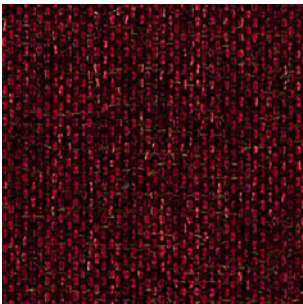
90



74



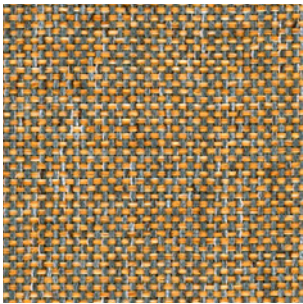
27



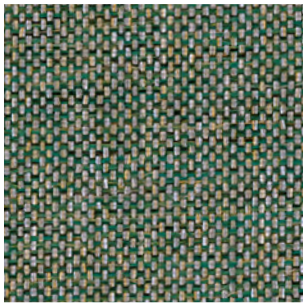
59



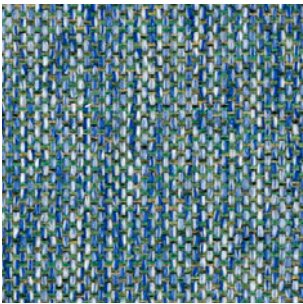
68



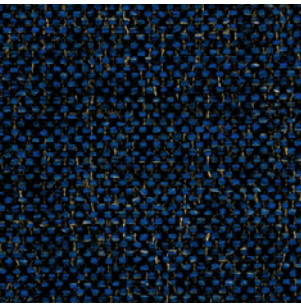
45



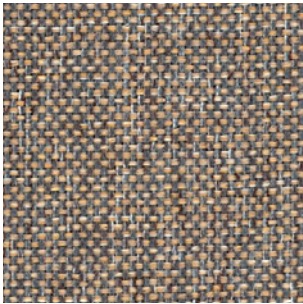
35



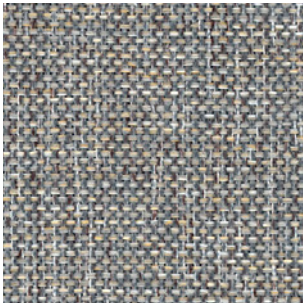
75



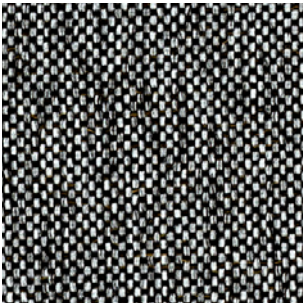
79



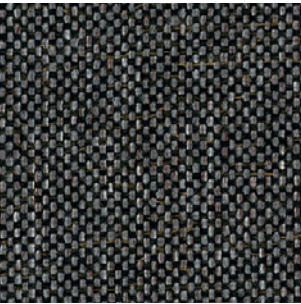
87



88



98



99



# G2 - PIXEL

## TECHNICAL DATA

- Composition:**  
100% polyolefin.
- Light fastness:**  
5 - 6, UNE-EN ISO 105-B02. Method 2.
- Abrasion:**  
40.000 Martindale EN ISO 12947-2.
- Resistance to pilling:**  
4 - 5, UNE-EN 12945-2.
- Dye fastness to rubbing:**  
Wet 4 - 5.  
Dry 4 - 5, UNE-EN ISO 105-X12.
- Tear Resistance:**  
Warp 120N.  
Weft 130N UNE-EN ISO 13937-3.
- Flammability:**  
EN 1021-1 (cigarette)  
BS 5852-0 (cigarette)  
CAL TB 117 Section 1.  
NFPA 260 Clase 1.

**Width:** 140cm  
**Weight:** 255gr/m²



\*\*\*Batch to batch variations may occur within commercial tolerances.



Note:

- The real colours and tones of the fabrics may differ from the digital image due to the scan process and the colour calibration of the different screens. Always request real fabric samples before ordering.
- Consult our Fabric and Leather Matrix to know about the availability of this material by product line.





# G2 - CORA

## TECHNICAL DATA

**Composition:**  
100% polyester.

**Light fastness:**  
5 EN ISO 105-B02, Method 2.

**Abrasion:**  
83.000 Martindale EN ISO 12947-1, 2.

**Resistance to pilling:**  
4, EN ISO 12945-2.

**Rubbing fastness in humid state:**  
5, ISO 105-X12.

**Rubbing solvents:**  
5, ISO 105-X12.

**Seam strength:**  
Warp 2,5mm.  
Weft 3,7mm, ISO 13936-2.

**Tear strength:**  
Warp exceed 154,2N.  
Weft exceed 112,3N, EN ISO 13937-3.

**Width:** 140cm  
**Weight:** 330gr/m²



\*\*\*Batch to batch variations may occur within commercial tolerances.



Note:

- The real colours and tones of the fabrics may differ from the digital image due to the scan process and the colour calibration of the different screens. Always request real fabric samples before ordering.
- Consult our Fabric and Leather Matrix to know about the availability of this material by product line.





# G2 - HILTON

## TECHNICAL DATA

- Composition:**  
100% polyester.
- Light fastness:**  
4, ISO 105 B02.
- Abrasion:**  
>25.000 Martindale ISO 12947-2.
- Resistance to pilling:**  
4 - 5, ISO 12945-2.
- Tear strength:**  
Warp 63N.  
Weft 63N, ISO13937-3.
- Dye fastness to rubbing:**  
Wet 4 - 5. Dry 4 - 5, ISO 105X12.

**Width:** 140cm  
**Weight:** 380gr/m²



\*\*\*Batch to batch variations may occur within commercial tolerances.



Note:

- The real colours and tones of the fabrics may differ from the digital image due to the scan process and the colour calibration of the different screens. Always request real fabric samples before ordering.
- Consult our Fabric and Leather Matrix to know about the availability of this material by product line.





# G2 - ADDO

## TECHNICAL DATA

- Composition:  
80% polyester, 20% cotton.
- Light fastness:  
5, ISO 105 B02, Method 2.
- Abrasion:  
40.000 Martindale ISO 12947-1, 2.
- Resistance to pilling:  
4, ISO 12945-2.
- Rubbing fastness in humid state:  
3, ISO 105-X12.
- Rubbing solvents:  
4 - 5, ISO 105-X12.
- Seam strength:  
Warp 3mm.  
Weft 2mm, ISO 13936-2.
- Tear strength:  
Warp exceed 175,1N.  
Weft exceed 120,7N, EN ISO 13937-3.
- Flammability:  
EN 1021 - 1 (cigarette).

Width: 140cm  
Weight: 365gr/m²



\*\*\*Batch to batch variations may occur within commercial tolerances.



Note:

- The real colours and tones of the fabrics may differ from the digital image due to the scan process and the colour calibration of the different screens. Always request real fabric samples before ordering.
- Consult our Fabric and Leather Matrix to know about the availability of this material by product line.





# G3 - APTA <sup>NEW</sup>

## TECHNICAL DATA

- Composition:**  
71% polyester, 18% modacrylic, 8% recycled cotton, 3% polyamide.
- Light fastness:**  
4 - 5, ISO 105 B02.
- Abrasion:**  
60.000 Martindale ISO 12947.
- Resistance to pilling:**  
5, ISO 12945-2.
- Fastness to rubbing:**  
4 - 5, ISO 105-X12.
- Tensile strength:**  
>350N, ISO 13934-1.
- Tear strength:**  
>20N, BS 4303.  
>3N, DIN 53859-5.
- Flammability:**  
EN 1021 - 1 (cigarette).  
EN 1021 - 2 (match).  
BS 5852 (cigarette).
- Environment:**  
Oeko-Tex® standard 100.
- Characteristics:**  
Anti-stain protection.  
Antibacterial and virus protection protection.

**Width:** ±140cm  
**Weight:** ±518gr/m



\*\*\*Batch to batch variations may occur within commercial tolerances.



Note:  
- The real colours and tones of the fabrics may differ from the digital image due to the scan process and the colour calibration of the different screens. Always request real fabric samples before ordering.  
- Consult our Fabric and Leather Matrix to know about the availability of this material by product line.





# G3 - CURA <sup>NEW</sup>

## TECHNICAL DATA

- Composition:**  
98% recycled polyester, 2% polyester.
- Light fastness:**  
5 - 8, ISO 105 B02.
- Abrasion:**  
100.000 Martindale ISO 12947-2.
- Resistance to pilling:**  
4 - 5, ISO 12945-2.
- Fastness to rubbing:**  
Wet 4 - 5.  
Dry 4 - 5, ISO 105-X12.
- Flammability:**  
EN 1021 - 1 (cigarette).  
EN 1021 - 2 (match).  
CA TB 117-2013.  
ASTM E 84 Class 1.
- Environment:**  
Oeko-Tex® standard 100.  
Complies with EU Ecolabel.

**Width:** ±140cm  
**Weight:** ±420gr/m²



\*\*\*Batch to batch variations may occur within commercial tolerances.



Note:

- The real colours and tones of the fabrics may differ from the digital image due to the scan process and the colour calibration of the different screens. Always request real fabric samples before ordering.
- Consult our Fabric and Leather Matrix to know about the availability of this material by product line.



60000



61232



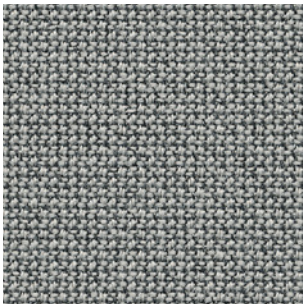
68262



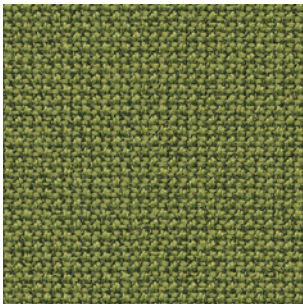
62083



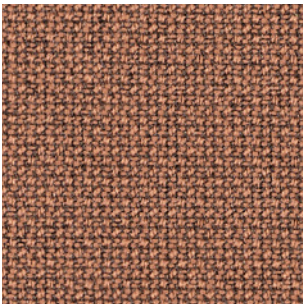
64013



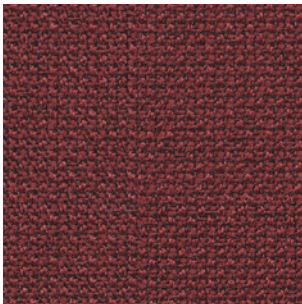
60112



68181



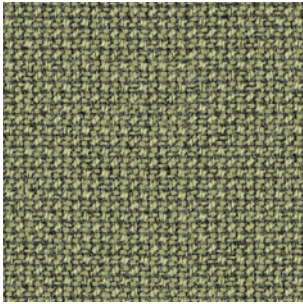
61257



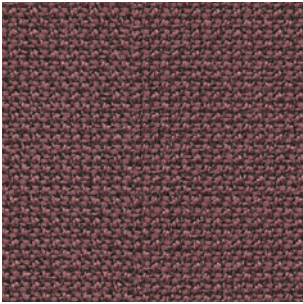
64196



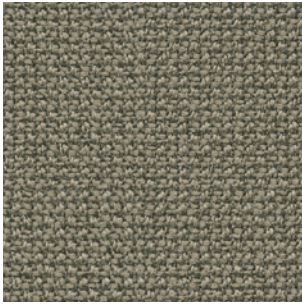
60110



68261



64195



61169



65105



66170



66166



60999



# G3 - IBER<sup>NEW</sup>

## TECHNICAL DATA

- Composition:**  
69% PES, 30% cotton, 1% polyamide.
- Light fastness:**  
4 - 5, ISO 105 B02.
- Abrasion:**  
70.000 Martindale ISO 12947 - BS 2543.
- Resistance to pilling:**  
4 - 5, ISO 12945-2.
- Fastness to rubbing:**  
Wet 4 - 5.  
Dry 4.
- Seam spliagge:**  
Warp <3mm.  
Weft <4mm.
- Flammability:**  
BS 5852 Part 1.
- Environment:**  
Oeko-Tex® standard 100.

**Width:** ±140cm  
**Weight:** ±570gr/m²



\*\*\*Batch to batch variations may occur within commercial tolerances.



Note:

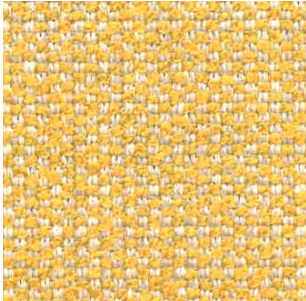
- The real colours and tones of the fabrics may differ from the digital image due to the scan process and the colour calibration of the different screens. Always request real fabric samples before ordering.
- Consult our Fabric and Leather Matrix to know about the availability of this material by product line.



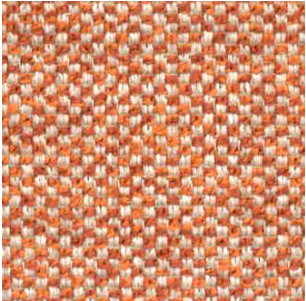
01



09



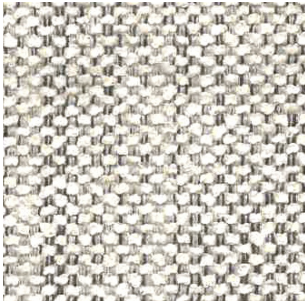
10



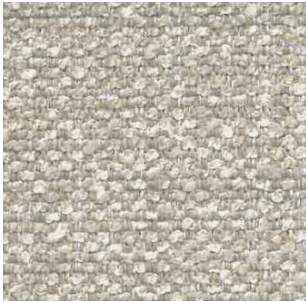
14



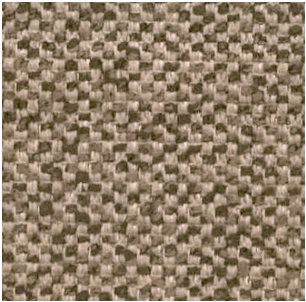
18



19



04



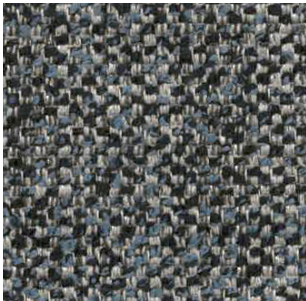
55



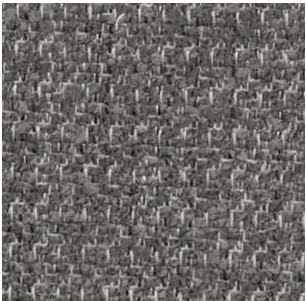
38



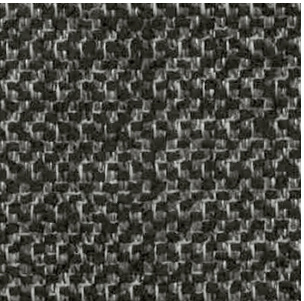
07



37



91



90



# G3 - CALMA

## TECHNICAL DATA

- Composition:

Topcoat: 70% Vinyl, 30% P.U.

Backing: 100% Microfiber Polyester.
- Light fastness:

>4.
- Abrasion:

>100.000 Martindale.
- Breaking strength:

Warp >180N.

Weft >330N, ISO 1421.
- Tear strength:

Warp >25N/cm.

Weft >28N/cm, ISO 4674-1.
- Flex Bally:

>100.000 cycles.

Width: 140cm.  
Weight: 853gr/m².



\*\*\*Batch to batch variations may occur within commercial tolerances.

Note:  
- The real colours and tones of the fabrics may differ from the digital image due to the scan process and the colour calibration of the different screens. Always request real fabric samples before ordering.  
- Consult our Fabric and Leather Matrix to know about the availability of this material by product line.





# G3 - RIVET

By Camira

## TECHNICAL DATA

- Composition:**  
100% REPREVE® recycled polyester.
- Light fastness:**  
6, EN ISO 105-B02, Method 3.
- Abrasion:**  
≥80.000 Martindale EN ISO 12947-2.
- Fastness to rubbing:**  
Wet 4.  
Dry 4, ISO 105 X12.
- Flammability:**  
EN 1021 - 1 (cigarette).  
EN 1021 - 2 (match).  
BS 7176 Low Hazard.  
UNI 9175 Class 1 IM.
- Environment:**  
Complies with EU Ecolabel.  
Certificate Indoor Advantage™ Gold.

**Width:** 140cm  
**Weight:** 280gr/m²

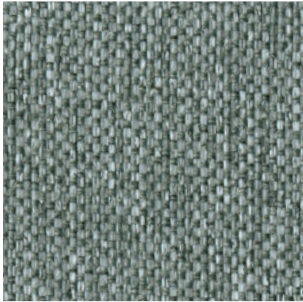


\*\*\*Batch to batch variations may occur within commercial tolerances.

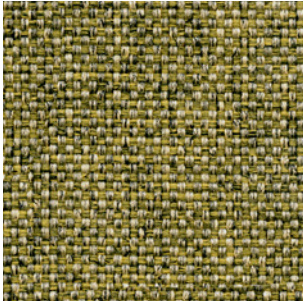


Note:

- The real colours and tones of the fabrics may differ from the digital image due to the scan process and the colour calibration of the different screens. Always request real fabric samples before ordering.
- Consult our Fabric and Leather Matrix to know about the availability of this material by product line.



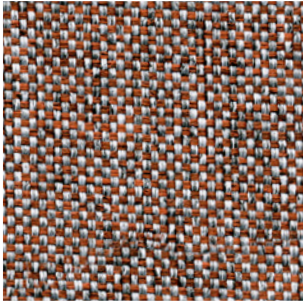
26



10



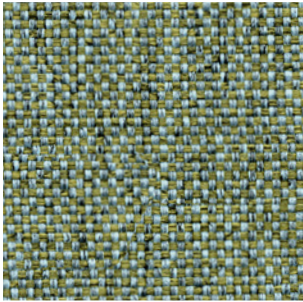
14



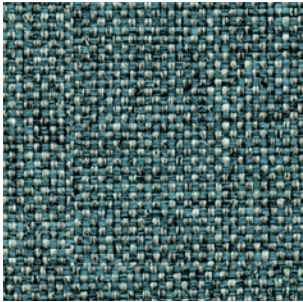
09



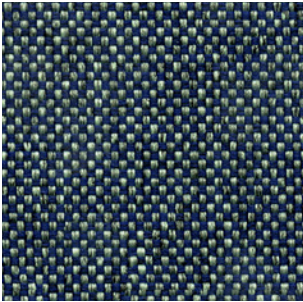
36



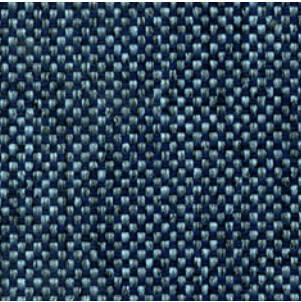
11



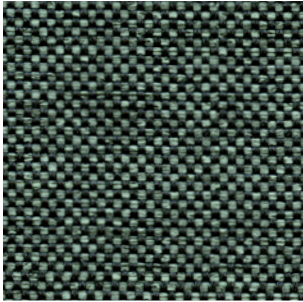
21



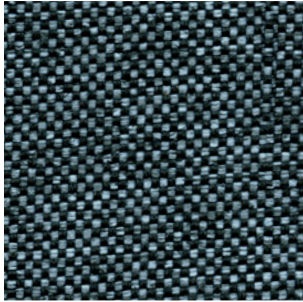
27



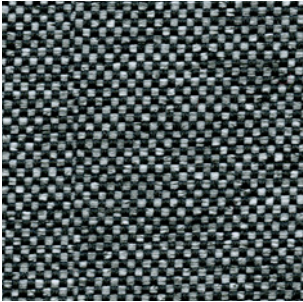
24



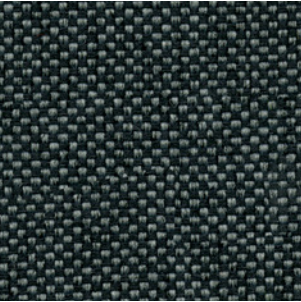
34



48



50



37



# G3 - ERA

By Camira

## TECHNICAL DATA

- Composition:**  
100% polyester.
- Light fastness:**  
5, EN ISO 105 B02.
- Abrasion:**  
≥100.000 Martindale EN ISO 12947.
- Fastness to rubbing:**  
Wet 4.  
Dry 4, ISO 105 X12.
- Flammability:**  
EN 1021 - 1 (cigarette).  
EN 1021 - 2 (match).  
BS 7176 Low Hazard.  
EN 13501-1 Adhered Class B, s1, d0.  
EN 13501-1 Un-adhered Class C, s1, d0.
- Environment:**  
OEKO-TEX® Standard 100.  
Certificate Indoor Advantage™ Gold.

**Width:** 140cm  
**Weight:** 320gr/m²

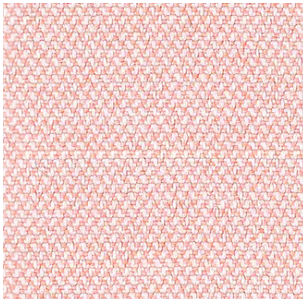


\*\*\*Batch to batch variations may occur within commercial tolerances.

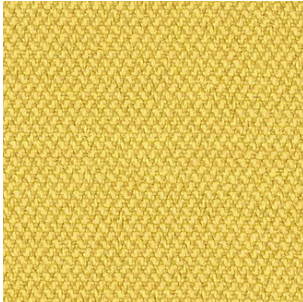


Note:

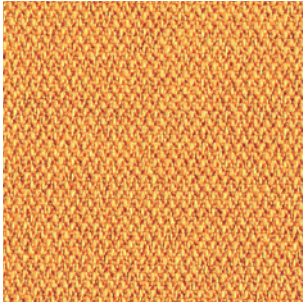
- The real colours and tones of the fabrics may differ from the digital image due to the scan process and the colour calibration of the different screens. Always request real fabric samples before ordering.
- Consult our Fabric and Leather Matrix to know about the availability of this material by product line.



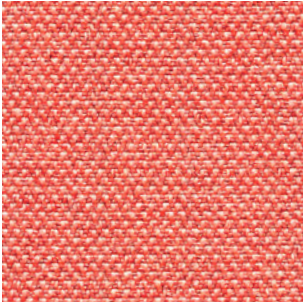
19



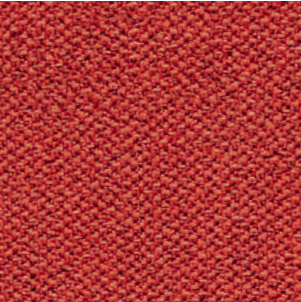
3



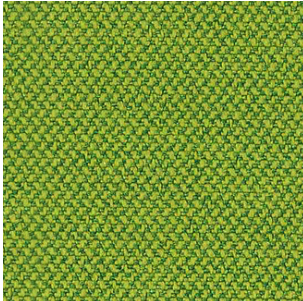
27



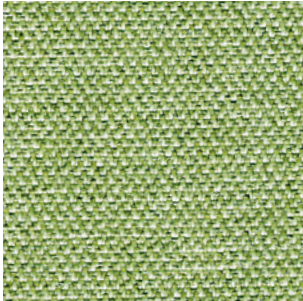
26



29



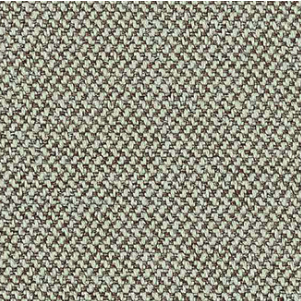
16



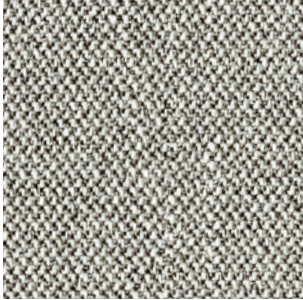
34



1



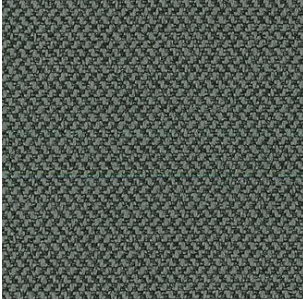
2



45



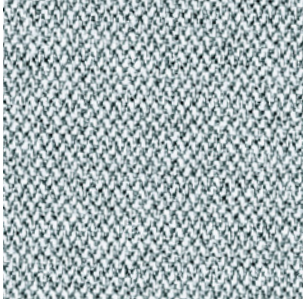
11



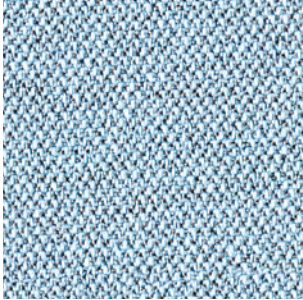
13



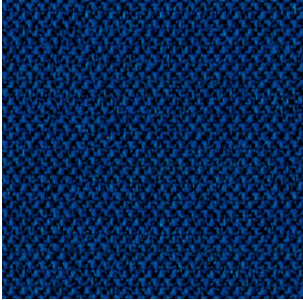
21



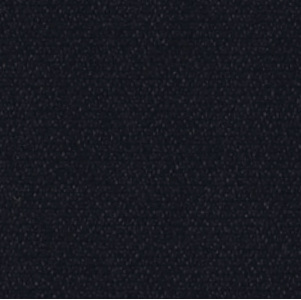
46



39



40



14



# G3 - MEDLEY

By Gabriel

## TECHNICAL DATA

- Composition:**  
100% polyester.
- Light fastness:**  
5 - 7, EN ISO 105 B02.
- Abrasion:**  
75.000 Martindale EN ISO 12947-2.
- Resistance to pilling:**  
4, EN ISO 12945-2.
- Fastness to rubbing:**  
Wet 4 - 5.  
Dry 4 - 5, ISO 105 X12.
- Flammability:**  
BS EN 1021 1&2 Cigarette and Match.  
BS EN 1021-1 Cigarette.  
BS 5852 Part 1 0,1 Cigarette and Match.  
BS 476 Part 7, class 2.  
Class Uno UNI 9174 - UNI 8457.  
ÖNORM B 3825-B2-3800-Q1 UK.  
CA TB 117.  
ASTM E 84.
- Environment:**  
Oeko-Tex® standard 100  
100% free of heavy metals.

**Width:** 140cm  
**Weight:** 510gr/m<sup>2</sup>



\*\*\*Batch to batch variations may occur within commercial tolerances.



Note:

- The real colours and tones of the fabrics may differ from the digital image due to the scan process and the colour calibration of the different screens. Always request real fabric samples before ordering.
- Consult our Fabric and Leather Matrix to know about the availability of this material by product line.



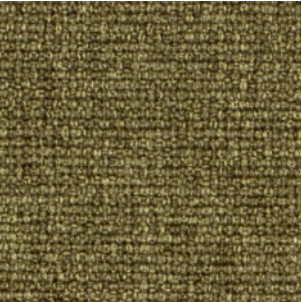
65011



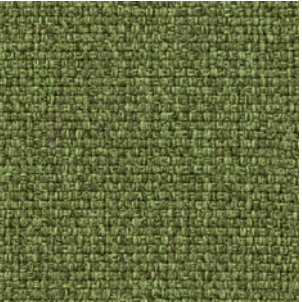
62054



61003



67002



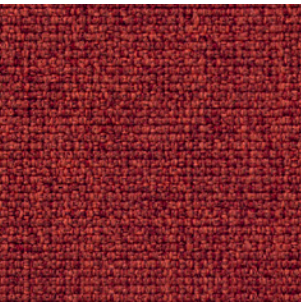
68005



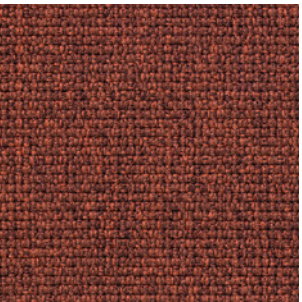
63064



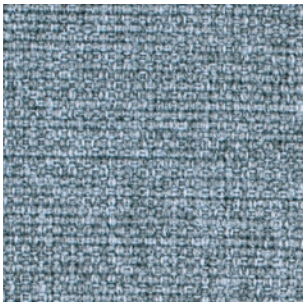
64019



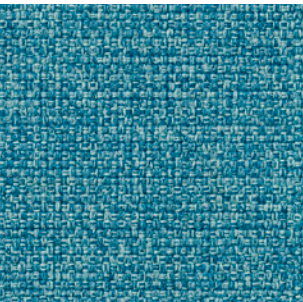
63016



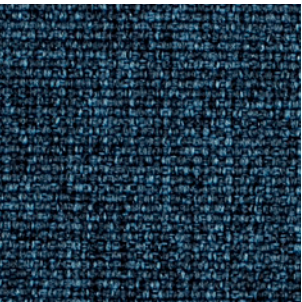
63063



66008



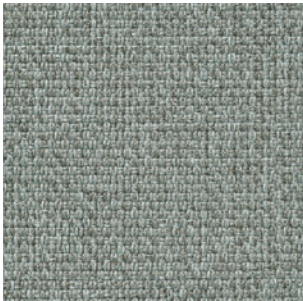
67006



66010



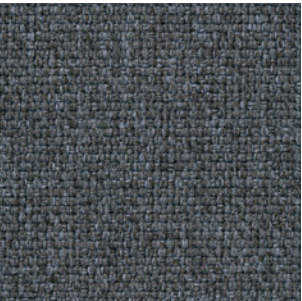
61004



60003



60167



60004



60999



# G4 - MAIN LINE FLAX

By Camira

## TECHNICAL DATA

- Composition:**  
75% virgin wool, 25% flax.
- Light fastness:**  
5, ISO 105 B02.
- Abrasion:**  
≥50.000 Martindale EN ISO 12947-2:1999.
- Resistance to pilling:**  
4 - 5, ISO 12945-2.
- Fastness to rubbing:**  
Wet 3.  
Dry 4, ISO 105 X12.
- Flammability:**  
EN 1021 - 1 (cigarette).  
EN 1021 - 2 (match).  
BS 7176 Low Hazard.  
BS 5852 Ignition source 5.  
BS 7176 Medium Hazard.  
NF D 60-013.  
ÖNORM B 3825 & A 3800-1.  
UNI 9175 Class 1 IM.  
BS 5867-2: Type B Curtains & Drapes.  
IMO FTP Code (Part 8).
- Environment:**  
Complies with EU Ecolabel.  
Certificate Indoor Advantage™ Gold.

**Width:** 140cm  
**Weight:** 437gr/m<sup>2</sup>



\*\*\*Batch to batch variations may occur within commercial tolerances.



Note:

- The real colours and tones of the fabrics may differ from the digital image due to the scan process and the colour calibration of the different screens. Always request real fabric samples before ordering.
- Consult our Fabric and Leather Matrix to know about the availability of this material by product line.





# G4 - CONNECT

By Gabriel

## TECHNICAL DATA

- Composition:  
48% wool, 41% recycled polyester, 9% polyamide, 2% polyester.
- Light fastness:  
5 - 7, ISO 105 B02.
- Abrasion:  
90,000 Martindale EN ISO 12947-2.
- Resistance to pilling:  
4 - 5, ISO 12945-2.
- Fastness to rubbing:  
Wet 4 - 5.  
Dry 4 - 5, ISO 105 X12.
- Flammability:  
EN 1021 - 1 (cigarette).  
EN 1021 - 2 (match).  
BS 5852 Crib 5.  
CA TB 117-2013.  
Class Uno UNI 9175 Class 1 I EMME.
- Environment:  
Oeko-Tex® standard 100.  
Complies with EU Ecolabel.

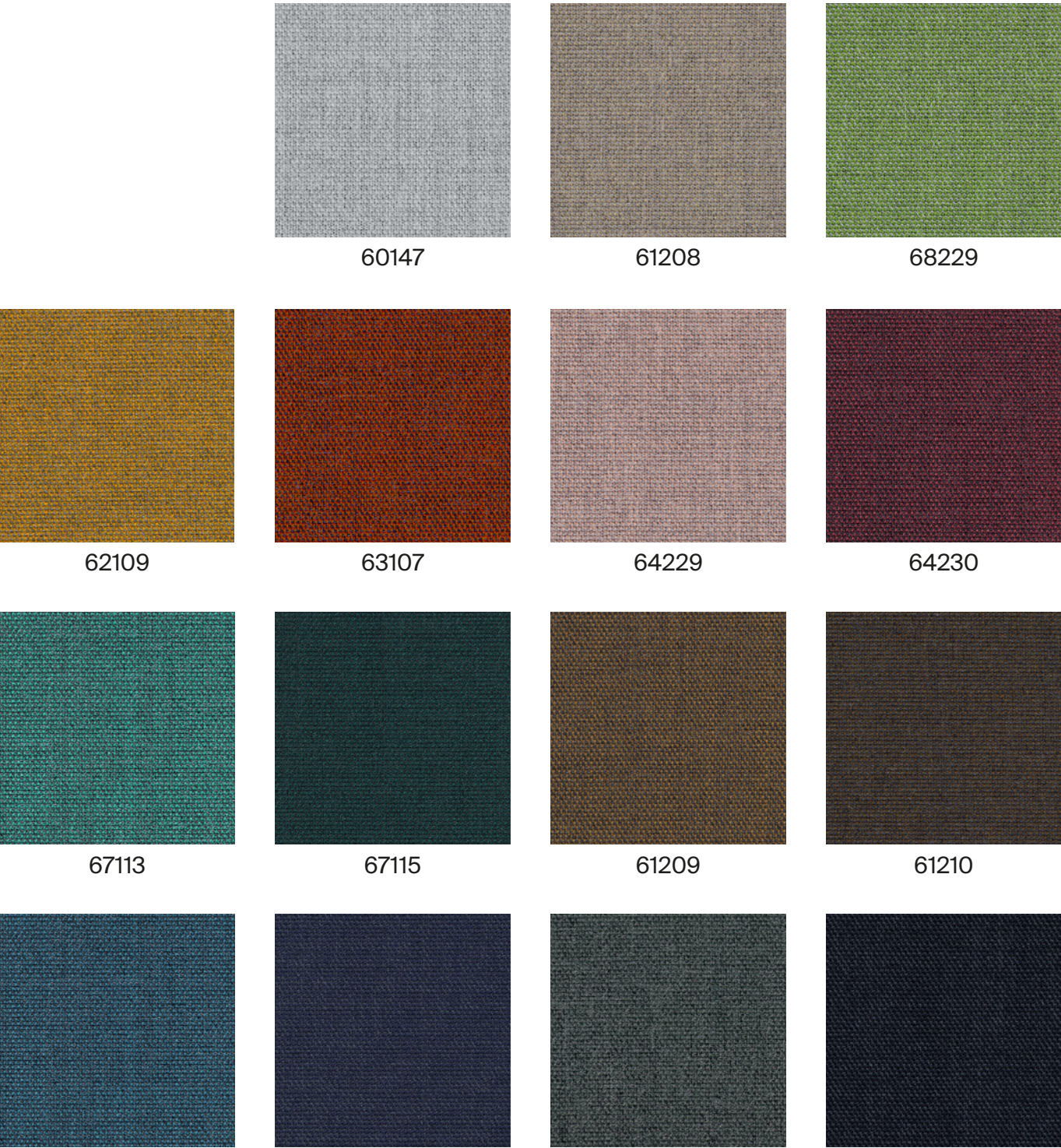
Width: 140cm  
Weight: 370gr/m²



\*\*\*Batch to batch variations may occur within commercial tolerances.



Note:  
- The real colours and tones of the fabrics may differ from the digital image due to the scan process and the colour calibration of the different screens. Always request real fabric samples before ordering.  
- Consult our Fabric and Leather Matrix to know about the availability of this material by product line.



60147 61208 68229

62109 63107 64229 64230

67113 67115 61209 61210

66205 65127 60152 60999



# G4 - VALENCIA

By Spradling

TECHNICAL DATA

**Composition:**  
Topcoat: 100% Vinyl.  
Backing: 100% Polyester Hi-Loft<sup>2</sup>™.

**Light fastness:**  
1000 hours, XENOTEST DIN 54004/NTC 1479.

**Abrasion:**  
300.000 cycles de Martindale EN ISO 12947 Part 2.

**Cold crack resistance:**  
-23°C.

**Characteristics:**  
Antimicrobial protection.  
Anibacterial protection.  
Antimycotic protection.

**Flammability:**  
EU: EN 1021 Part 1 y 2.  
ES: UNE 23.727-90 1R/M.2.  
FR: NF P 92-503/M2.  
DE: DIN 4102 B2.  
IT: UNI 9175 (1987) / UNI 9175/FA1 (1994) Classe 1.IM (UNO I EMME).  
AT: ÖNORM B 3825, Gruppe 1 - Schwerbrennbares Verhalten.  
AT: ÖNORM A 3800 Teil 1, Qualmbildungsklasse Q1 - schwachqualmend.  
IMO FTP 2010 Code MSC.307 (88) Part 8 3.1 & 3.2.  
US: FMVSS 302.  
US: FAR 25/853.  
(MED) Marine Equipment Directive.  
ECE R118.02 (replaces Directive 95/28/CE) Annexes 6, 7 & 8.  
EN 71-2:2006+A1:2007 - Toy safety - Parte 2: Inflammability.

**Width:** 140cm  
**Weight:** 685gr/m²



\*\*\*Batch to batch variations may occur within commercial tolerances.



Note:

- The real colours and tones of the fabrics may differ from the digital image due to the scan process and the colour calibration of the different screens. Always request real fabric samples before ordering.
- Consult our Fabric and Leather Matrix to know about the availability of this material by product line.





# G4 - STEP NEW

By Gabriel

## TECHNICAL DATA

- Composition:  
100% trevira CS.
- Light fastness:  
5 - 7, ISO 105 B02.
- Abrasion:  
100.000 Martindale EN ISO 12947.
- Resistance to pilling:  
4 - 5, ISO 12945-2.
- Fastness to rubbing:  
Wet 4 - 5. - Dry 4 - 5, ISO 105 X12.
- Flammability:  
IMO MSC 307(88) Annex 1 part 8.  
MED.  
Certificate IMO.  
DIN 4102 B1.  
NFP 92-503/504/505 M1.  
BS EN 1021 1&2 Cigarette and Match.  
BS EN 1021-1 Cigarette.  
BS 5852 Part 1 0,1 Cigarette and Match.  
BS 5852 Crib 5.  
ÖNORM B 3825-B1-3800-Q1 UK.  
FAR/JAR 25.853 (a) (i) (ii).  
BS 7176 Medium hazard.  
AM 18 - NF D 60-013-(only for fabric).  
CA TB 117-2013.  
Class Uno UNI 9175 Class 1 I EMME.  
DIN EN 13501-1 B-s1,d0.
- Environment:  
Oeko-Tex - EU Ecolabel - 100% free of heavy metals.

Width: 140cm  
Weight: 470gr/m²



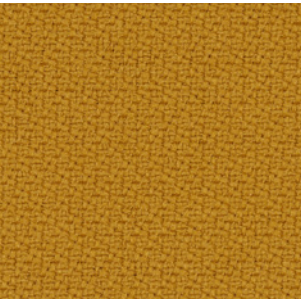
\*\*\*Batch to batch variations may occur within commercial tolerances.



Note:  
- The real colours and tones of the fabrics may differ from the digital image due to the scan process and the colour calibration of the different screens. Always request real fabric samples before ordering.  
- Consult our Fabric and Leather Matrix to know about the availability of this material by product line.



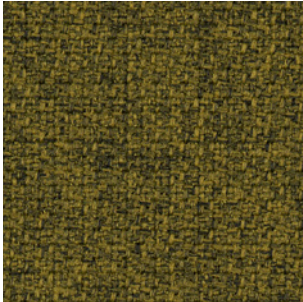
2442 - 64159



2440 - 62057



2442 - 68301



2442 - 68165



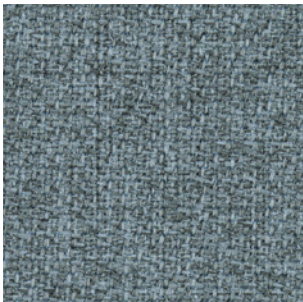
2440 - 68165



2440 - 61149



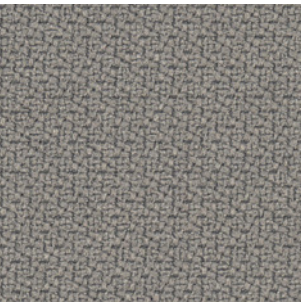
2442 - 60004



2442 - 67004



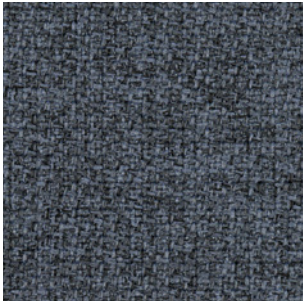
2440 - 60004



2440 - 60011



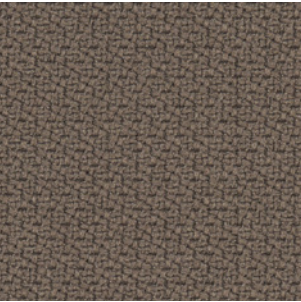
2442 - 60011



2442 - 66152



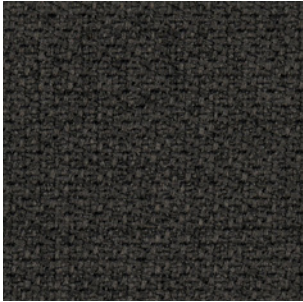
2440 - 66764



2440 - 60090



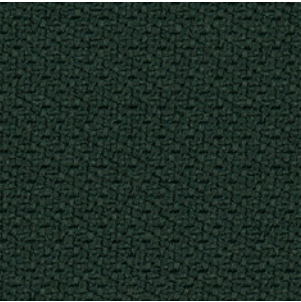
2442 - 61103



2442 - 60021



2440 - 60999



2440 - 68121



# G5 - DOLCE

By Spradling

## TECHNICAL DATA

- Composition:**
  - Topcoat: 100% polyurethane.
  - Backing: 100% rayon.
- Light fastness:**
  - 40 hours, XENOTEST DIN 54004/NTC 1479.
- Abrasion:**
  - ≥300.000 Martindale EN ISO 12947 Part 2.
- Cold crack resistance:**
  - 23°C.
- Characteristics:**
  - Antibacterial protection.
- Flammability:**
  - EU: EN 1021 Part 1 y 2
  - US: FMVSS 302
  - UK: BS 5852 Part 2 CRIB 5
  - IMO FTP 2010 Code MSC.307 (88) Part 8 3.1 & 3.2.

**Width:** 140cm  
**Weight:** 685gr/m²



\*\*\*Batch to batch variations may occur within commercial tolerances.

Note:  
- The real colours and tones of the fabrics may differ from the digital image due to the scan process and the colour calibration of the different screens. Always request real fabric samples before ordering.  
- Consult our Fabric and Leather Matrix to know about the availability of this material by product line.



6703



6706



6708



6719



6714



6709



6711



6712



6717



6729



6726



6727



6736



6735



6734



6724



6728



# G5 - SYNERGY

By Camira

## TECHNICAL DATA

- Composition:

95% virgin wool, 5% polyamide.
- Light fastness:

5, ISO 105-B02.
- Abrasion:

≥100.000 Martindale EN ISO 12947.
- Fastness to rubbing:

Wet 4.

Dry 4, ISO 105 X12.
- Flammability:

EN 1021 - 1 (cigarette).

EN 1021 - 2 (match).

BS 7176 Low Hazard.

NF D 60-013.

ÖNORM B 3825 & A 3800-1 (sobre 58kg/m³ Foam CMHR).

UNI 9175 Classe 1 IM.

EN 13501-1 Adhered Class D, s1, d0.

EN 13501-1 Un-adhered Class E, s2, d0.

IMO FTP Code (Part 8).
- Environment:

Complies with EU Ecolabel.

Certificate Indoor Advantage™ Gold.

Width: 140cm  
Weight: 400gr/m²



\*\*\*Batch to batch variations may occur within commercial tolerances.



Note:

- The real colours and tones of the fabrics may differ from the digital image due to the scan process and the colour calibration of the different screens. Always request real fabric samples before ordering.
- Consult our Fabric and Leather Matrix to know about the availability of this material by product line.



74



45



43



73



84



32



22



37



34



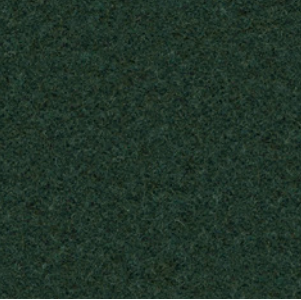
49



59



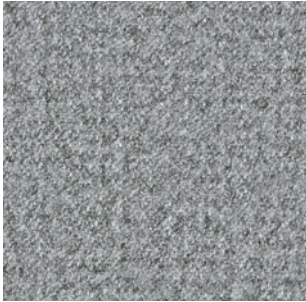
62



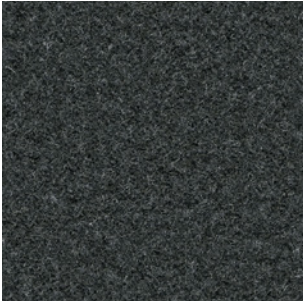
41



8



16



17



27



# G5 - REMIX

By Kvadrat

## TECHNICAL DATA

- Designer:  
Giulio Ridolfo.
- Composition:  
90% new wool, 10% nylon.
- Light fastness:  
5 - 7, ISO 105-B02.
- Abrasion:  
100.000 Martindale EN ISO 12947.
- Resistance to pilling:  
4, EN ISO 12945.
- Flammability:  
AS/NZS 1530.3.  
BS 5852 part 1.  
EN 1021-1/2.  
IMO FTP Code 2010: Part 8.  
NF D 60 013.  
NFPA 260.  
Önorm B1/Q1.  
UNI 9175 1IM.  
US Cal. Bull. 117-2013.
- Environment:  
Complies with EU ecolabel “The Flower”.  
100% free of heavy metals.

Width: 140cm  
Weight: 415gr/m²

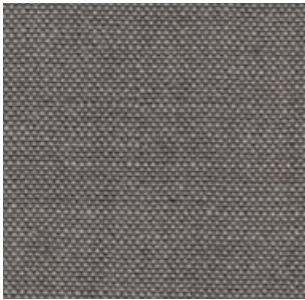


\*\*\*Batch to batch variations may occur within commercial tolerances.



Note:

- The real colours and tones of the fabrics may differ from the digital image due to the scan process and the colour calibration of the different screens. Always request real fabric samples before ordering.
- Consult our Fabric and Leather Matrix to know about the availability of this material by product line.



136



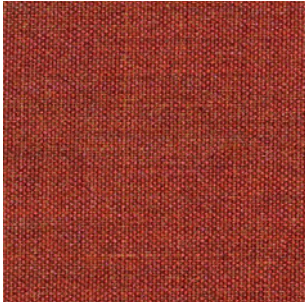
433



452



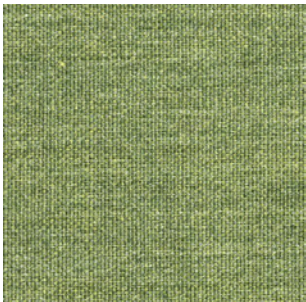
346



653



326



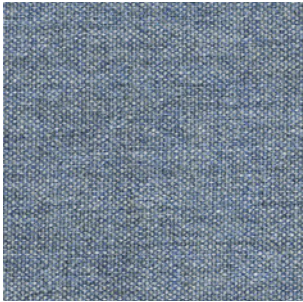
933



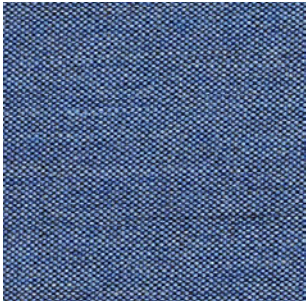
152



356



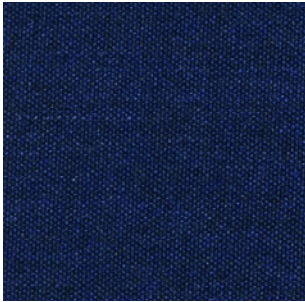
733



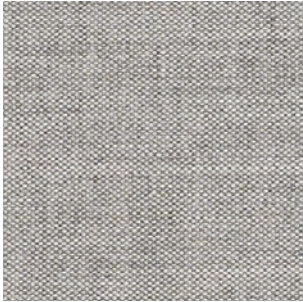
743



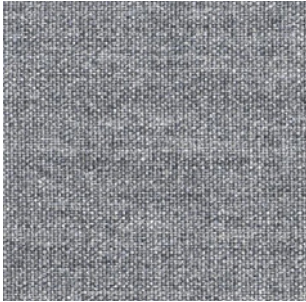
266



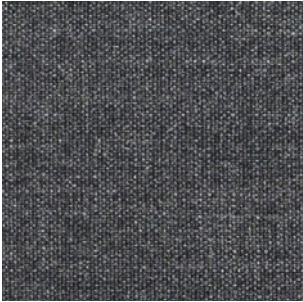
773



123



143



163



183



# G5 - CANVAS

By Kvadrat

## TECHNICAL DATA

- Designer:**  
Giulio Ridolfo.
- Composition:**  
90% new wool, 10% nylon.
- Light fastness:**  
5 - 7, ISO 105-B02.
- Abrasion:**  
100.000 Martindale EN ISO 12947.
- Resistance to pilling:**  
4 - 5, EN ISO 12945.
- Flammability:**  
AS/NZS 1530.3.  
BS 5852 Crib 5 when flameprotected.  
BS 5852, ignition source 3.  
BS 5852 part 1.  
DIN 4102 B2.  
IMO FTP Code 2010: Part 8.  
NF D 60 013.  
NFPA 260.  
Önorm B1/Q1.  
UNI 9175 1IM.  
US Cal. Bull. 117-2013.
- Environment:**  
Complies with EU ecolabel “The Flower”.  
100% free of heavy metals.

**Width:** 140cm  
**Weight:** 480gr/m².



\*\*\*Batch to batch variations may occur within commercial tolerances.



Note:

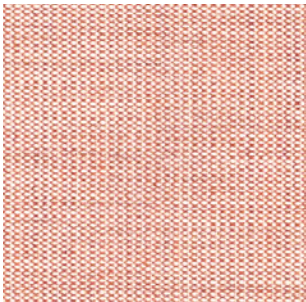
- The real colours and tones of the fabrics may differ from the digital image due to the scan process and the colour calibration of the different screens. Always request real fabric samples before ordering.
- Consult our Fabric and Leather Matrix to know about the availability of this material by product line.



124



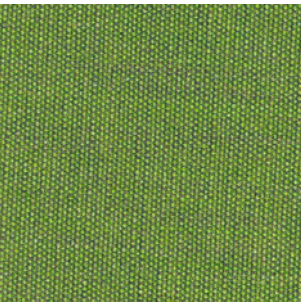
244



614



654



954



964



454



424



264



364



684



794



174



# G6 - STEELCUT TRIO

By Kvadrat

TECHNICAL DATA

- Designer:**  
Frans Dijkmeijer and Giulio Ridolfo.
- Composition:**  
90% new wool, 10% nylon.
- Light fastness:**  
5 - 7 ISO 105-B02.
- Abrasion:**  
100.000 Martindale EN ISO 12947.
- Resistance to pilling:**  
4, EN ISO 12945.
- Flammability:**  
AS/NZS 1530.3  
AS/NZS 3837 class 2.  
BS 5852 part 1.  
DIN 4102 B2.  
EN 1021-1/2.  
IMO FTP Code 2010: Part 8.  
NF D 60 013.  
NFPA 260.  
Önorm B1/Q1.  
UNI 9175 1IM.  
US Cal. Bull. 117-2013.
- Environment:**  
Complies with EU ecolabel “The Flower”.  
100% free of heavy metals.

**Width:** 140cm  
**Weight:** 770gr/m²



\*\*\*Batch to batch variations may occur within commercial tolerances.



Note:

- The real colours and tones of the fabrics may differ from the digital image due to the scan process and the colour calibration of the different screens. Always request real fabric samples before ordering.
- Consult our Fabric and Leather Matrix to know about the availability of this material by product line.



G6 - STEELCUT TRIO



# G6 - FIORD

By Kvadrat

## TECHNICAL DATA

- Designer:

Louise Sigvardt & Tone Barnung.
- Composition:

92% new wool, 8% nylon.
- Light fastness:

5 - 7, ISO 105-B02.
- Abrasion:

60.000 Martindale EN ISO 12947.
- Resistance to pilling:

4 - 5, EN ISO 12945.
- Flammability:

AS/NZS 3837 class 2.  
ASTM E84 Class A Adhered.  
ASTM E84 Class A Unadhered.  
BS 5852 part 1.  
EN 1021-1/2.  
IMO FTP Code 2010:Part 8.  
NF D 60 013.  
NFPA 260  
ÖNORM B1/Q1  
UNI 9175 1IM.  
US Cal. Bull. 117-2013.
- Environment:

Complies with EU ecolabel “The Flower”  
100% free of heavy metals.

Width: 140cm  
Weight: 500gr/m²

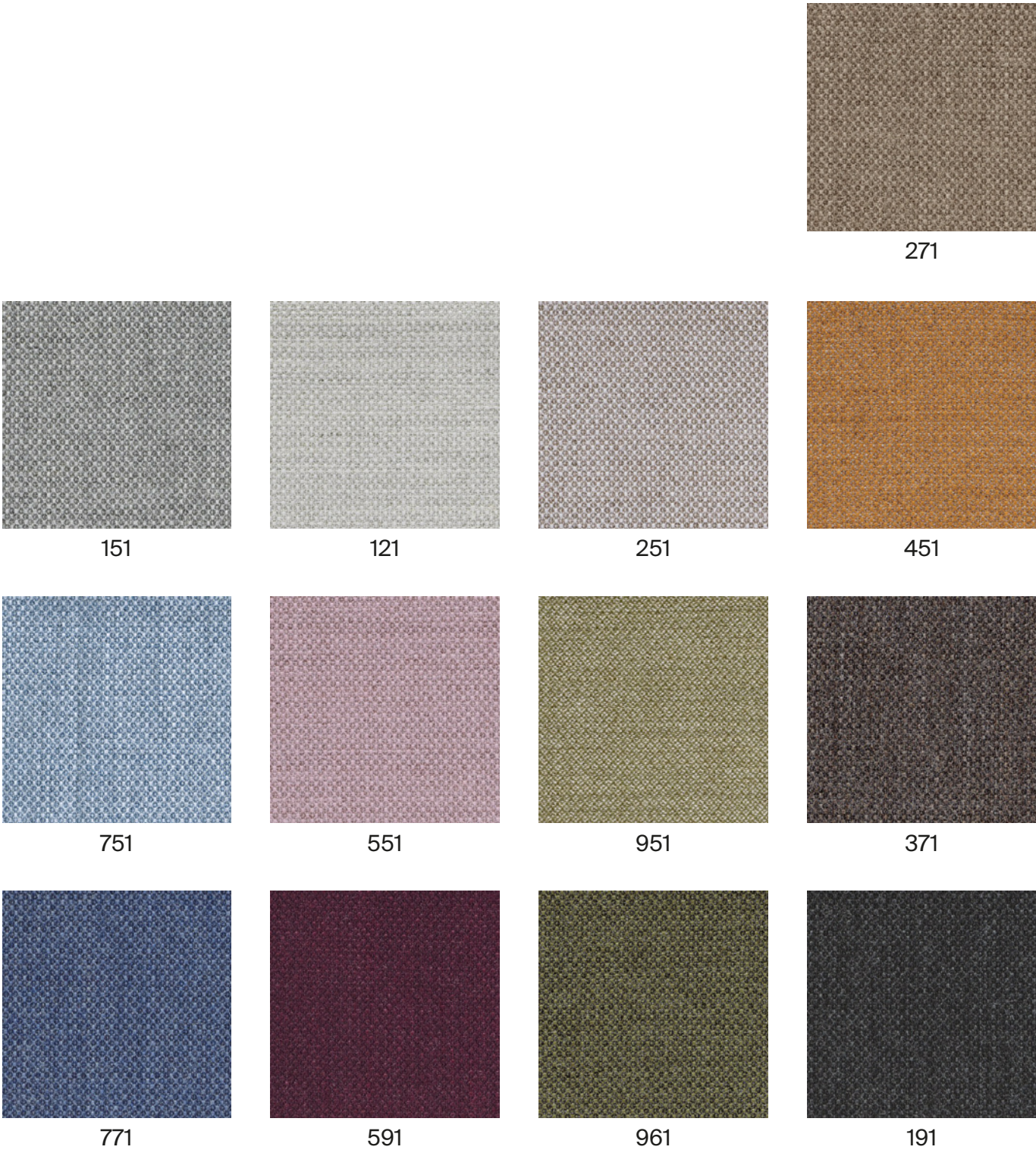


\*\*\*Batch to batch variations may occur within commercial tolerances.



Note:

- The real colours and tones of the fabrics may differ from the digital image due to the scan process and the colour calibration of the different screens. Always request real fabric samples before ordering.
- Consult our Fabric and Leather Matrix to know about the availability of this material by product line.





# G7 - HALLINGDAL

By Kvadrat

## TECHNICAL DATA

- Designer:**  
Nanna Ditzel.
- Composition:**  
70% new wool, 30% viscose.
- Light fastness:**  
5 - 7 ISO 105-B02.
- Abrasion:**  
100.000 Martindale EN ISO 12947.
- Resistance to pilling:**  
3, EN ISO 12945.
- Flammability:**  
AS/NZS 1530.3.  
AS/NZS 3837.  
BS 5852 Crib 5.  
BS5852 part 1.  
DIN 4102 B2.  
EN 1021-1/2.  
IMO FTP Code 2010: Part 8.  
NF D 60 013.  
NFPA 260.  
Önorm B1/Q1.  
UNI 9175 1IM.  
US Cal. Bull. 117 – 2013.
- Environment:**  
Complies with EU ecolabel “The Flower”.

**Width:** 140cm  
**Weight:** 795gr/m²

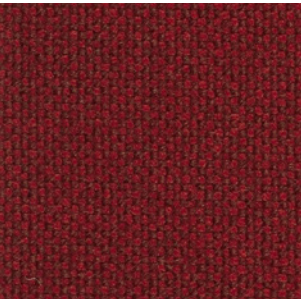


\*\*\*Batch to batch variations may occur within commercial tolerances.



Note:

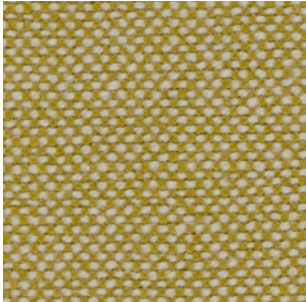
- The real colours and tones of the fabrics may differ from the digital image due to the scan process and the colour calibration of the different screens. Always request real fabric samples before ordering.
- Consult our Fabric and Leather Matrix to know about the availability of this material by product line.



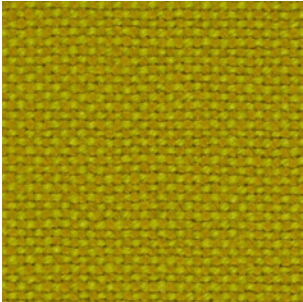
687



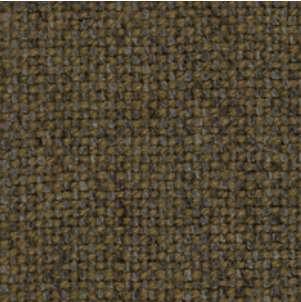
200



407



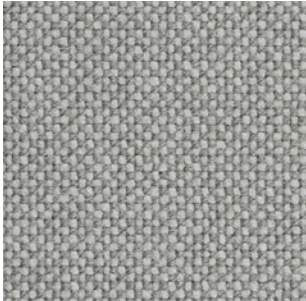
420



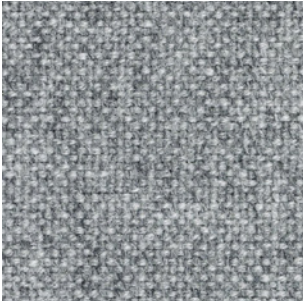
227



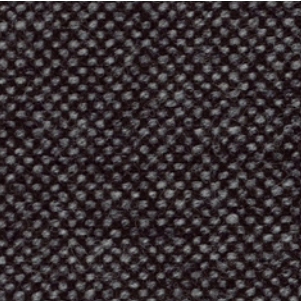
100



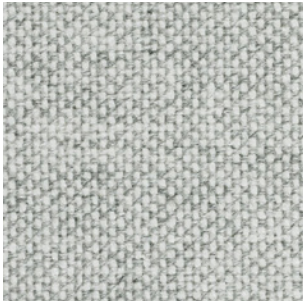
123



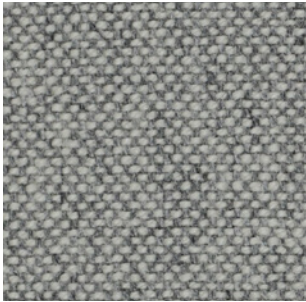
130



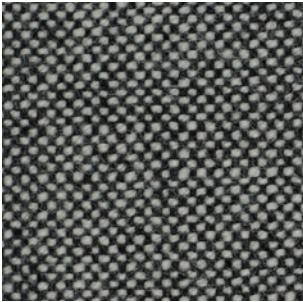
368



110



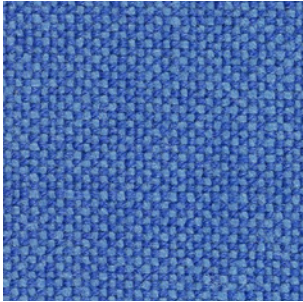
116



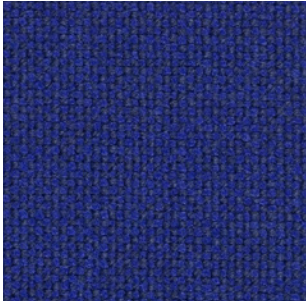
126



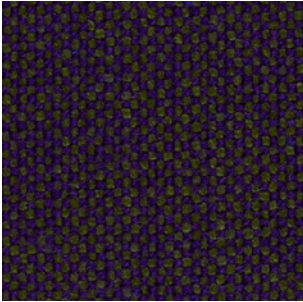
180



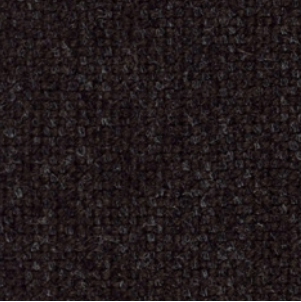
733



773



968



376



# G10 - LEATHER

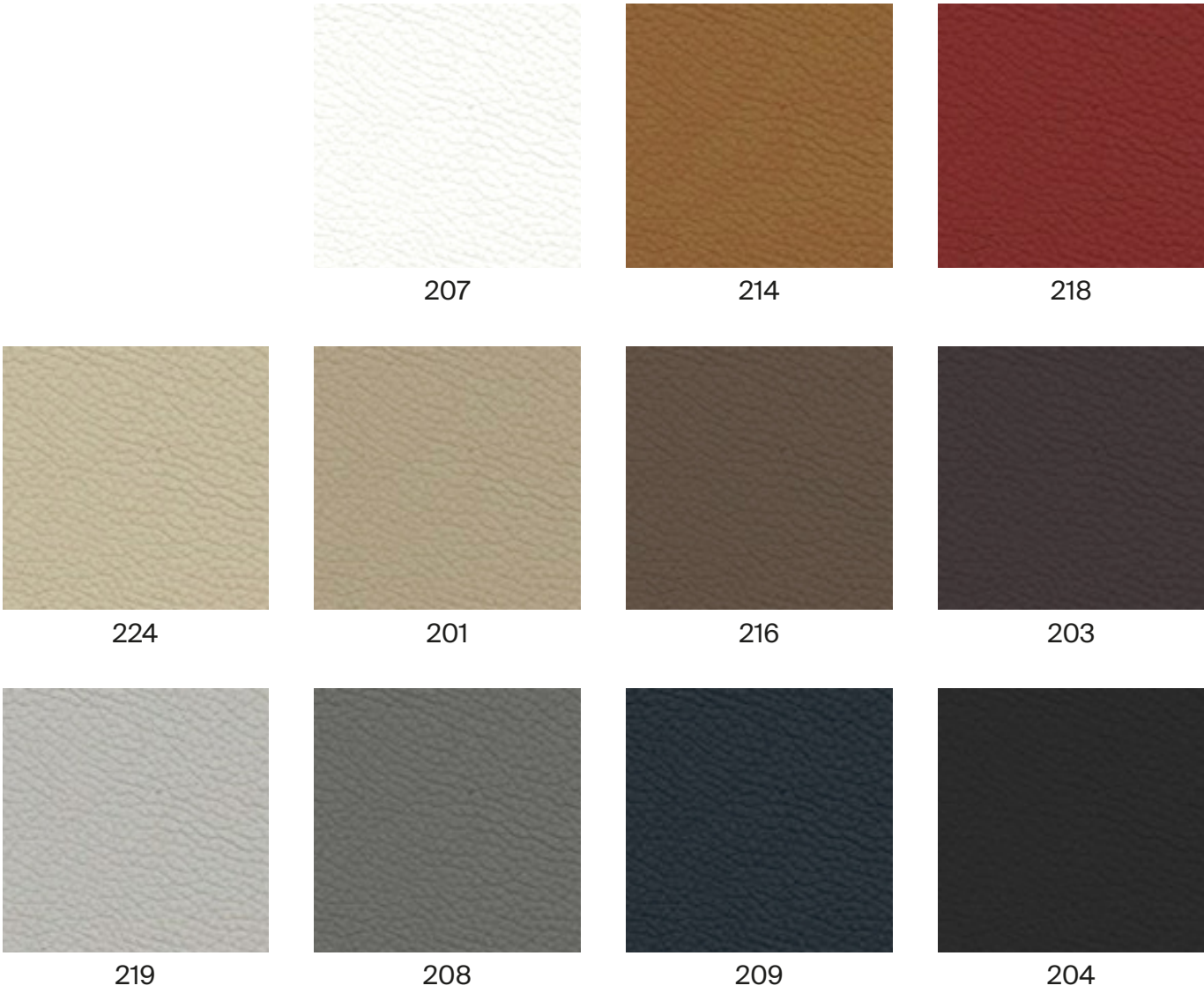
## TECHNICAL DATA

- Composition:**
  - Cow leather.
- Light fastness:**
  - ≥4/5, UNI EN ISO 105B02.
- Fastness to rubbing:**
  - Wet ≥4 (150 cycles).
  - Dry ≥4 (500 cycles).
  - Perspiration ≥4 (80 cycles), UNI EN ISO 11640 - 11641 (pH8).
- Tear strength:**
  - >20N, EN ISO 3377-1.
- Determination of PH:**
  - >3,5, EN ISO 4045.
- Adhesion of the finish:**
  - ≥2, UNI EN ISO 11644.
- Determination of dry ex resistance:**
  - Without damage, UNI EN ISO 5402.
- Flammability:**
  - Ignition source 0 (cigarette).
  - Ignition source 1 (match).
  - BS 5852-1979.
  - BS EN 1021-1-2.
- Thickness:**
  - 0,9 - 1,1mm
- Average surface:**
  - 4,8 - 5,0m²
- Maintenance:**
  - Wash with neutral soap and water or with a cleaning product for leather.

\*\*\*Batch to batch variations may occur within commercial tolerances.

Note:

- The real colours and tones of the fabrics may differ from the digital image due to the scan process and the colour calibration of the different screens. Always request a real leather sample before ordering.
- Consult our Fabric and Leather Matrix to know about the availability of this material by product line.





# G11 - LEATHER

## TECHNICAL DATA

- Composition:**  
Cow leather.
- Light fastness:**  
≥5, UNI EN ISO 105B02.
- Fastness to rubbing:**  
Wet ≥4 (80 cycles).  
Dry ≥4 (500 cycles).  
Perspiration ≥4 (50 cycles), UNI EN ISO 11640 - 11641.
- Tear strength:**  
≥20N, EN ISO 3377-1.
- Determination of PH:**  
≥3,5 ≤0,7 EN ISO 4045.
- Adhesion of the finish:**  
≥2,5N / 10mm, UNI EN ISO 11644.
- Determination of dry flex resistance:**  
>50.000 cycles, UNI EN ISO 5402-1.
- Flammability:**  
Ignition source 0 (cigarette)  
Ignition source 1 (match), BS 5852-1:79.
- Thickness:**  
0,9 - 1,1mm
- Average surface:**  
4,8 - 5,0m²
- Maintenance:**  
Wash with neutral soap and water or with a cleaning product for leather.

\*\*\*Batch to batch variations may occur within commercial tolerances.

Note:  
- The real colours and tones of the fabrics may differ from the digital image due to the scan process and the colour calibration of the different screens. Always request a real leather sample before ordering.  
- Consult our Fabric and Leather Matrix to know about the availability of this material by product line.

