

INCLASS

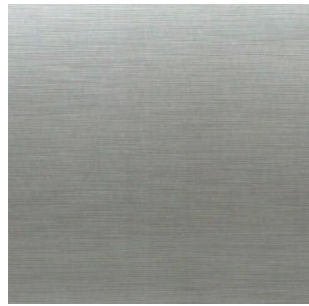


REVER FINISHES BOOK

Fabrics / Leathers / Materials

BASES

ALUMINUM BASES

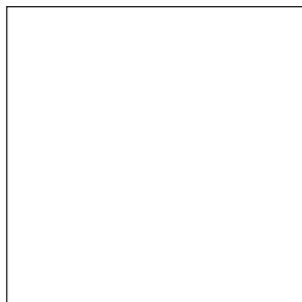


POLISHED

M1 COLOURS



B00



W01

G1 - ASIS

TECHNICAL DATA

Composition:
100% polyester.

Light fastness:
5 - 6, ISO 105 B02, Method 2.

Abrasion:
100.000 Martindale EN ISO 12947-2.

Resistance to pilling:
4 - 5, ISO 12945-2.

Rubbing fastness in humid state:
4, ISO 105-X12.

Rubbing solvents:
4, ISO 105-X12.

Tear strength:
Warp 140N.
Weft 110N, EN ISO 13937-3.

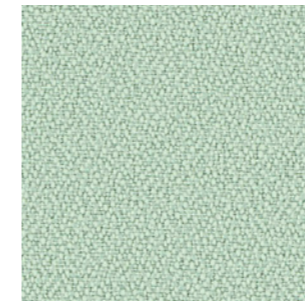
Flammability:
EN 1021 - 1/2.
BS 5852 0.
BS 7176 Low Hazard.
CAL TB 117 Section 1.
NFFPA 260 Class 1.
Regulation n° 118 UNECE Annexed 6.
IMO MSC.307 (88) Annexed I Part 8.

Width: 140cm
Weight: 335gr/m²

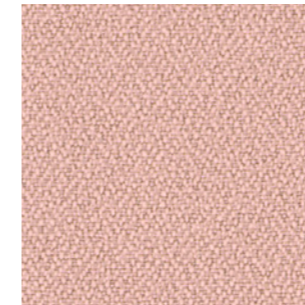


***Batch to batch variations may occur within commercial tolerances.

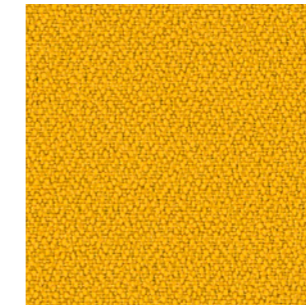
Note:
- The real colours and tones of the fabrics may differ from the digital image due to the scan process and the colour calibration of the different screens. Always request real fabric samples before ordering.
- Consult our Fabric and Leather Matrix to know about the availability of this material by product line.



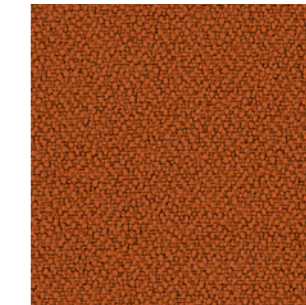
198



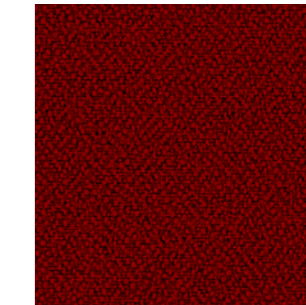
315



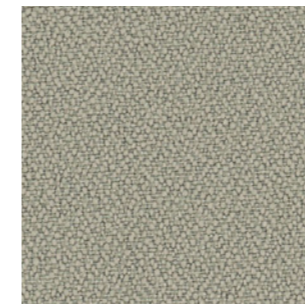
88



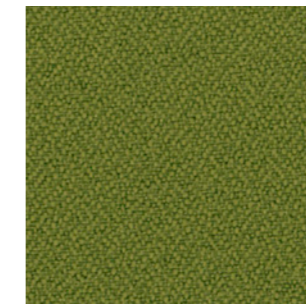
122



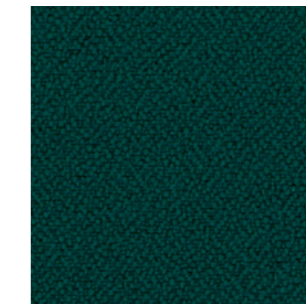
4011



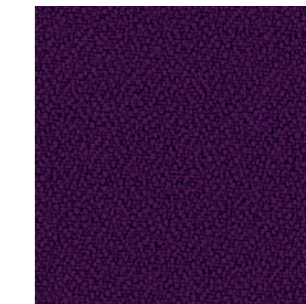
422



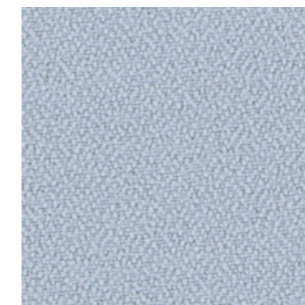
77



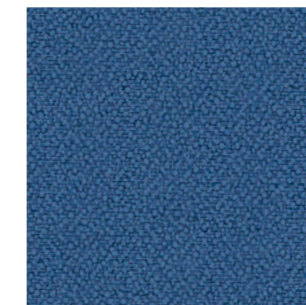
47



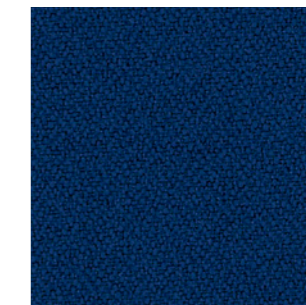
292



86



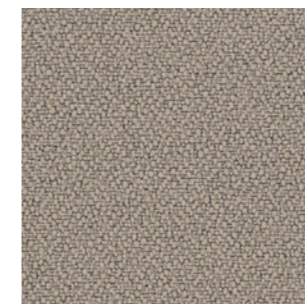
4



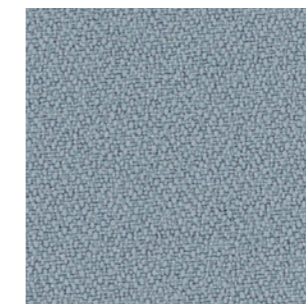
5



26



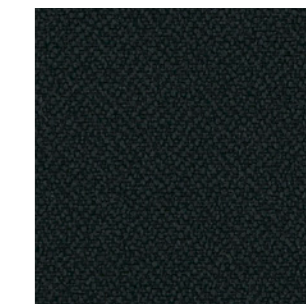
132



170



108



9

G2 - JORDAN ^{NEW}

TECHNICAL DATA

Composition:

100% polyester.

Light fastness:

5, ISO 105 B02.

Abrasion:

100.000 Martindale EN ISO 12947-1, 2.

Resistance to pilling:

4 - 5, ISO 12945-2.

Fastness to rubbing:

Wet 5.

Dry 5, ISO 105-X12.

Tear strength:

Warp 180, 2N.

Weft 174, 3N, EN ISO 13937-3.

Seam slippage:

Warp 1,6N.

Weft 2,0N, EN ISO 13936-2.

Tensile strength:

Warp 1257N.

Weft 1189N, EN ISO 13934-1.

Width: ±146cm

Weight: ±360gr/m²



***Batch to batch variations may occur within commercial tolerances.

Note:

- The real colours and tones of the fabrics may differ from the digital image due to the scan process and the colour calibration of the different screens. Always request real fabric samples before ordering.

- Consult our Fabric and Leather Matrix to know about the availability of this material by product line.



G2 - NEL ^{NEW}

TECHNICAL DATA

Composition:

95% PES, 5% cotton.

Light fastness:

5 - 6, UNE 40187 - BS1006-B2.

Abrasion:

>38.000 Martindale EN ISO 12947-2.

Resistance to pilling:

4 - 5, ISO 12945-1.

Rubbing fastness in humid state:

4 - 5, ISO 105-D01.

Rubbing solvents:

4 - 5, ISO 105-D01.

Tear strength:

Warp 2mm.

Wet 2,1mm, EN ISO 13937-2.

Characteristics:

Instalimp® treatment.

Width: ±140cm

Weight: ±445gr/m²



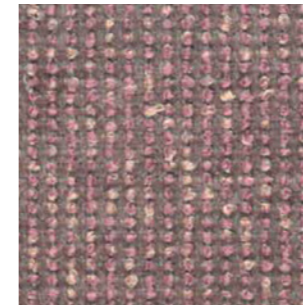
***Batch to batch variations may occur within commercial tolerances.



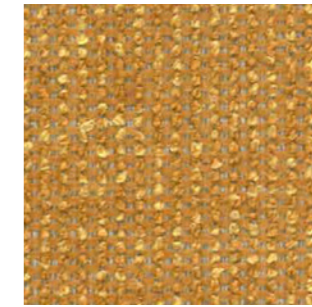
Note:

- The real colours and tones of the fabrics may differ from the digital image due to the scan process and the colour calibration of the different screens. Always request real fabric samples before ordering.

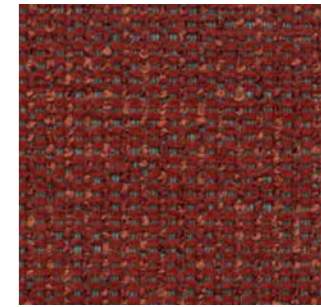
- Consult our Fabric and Leather Matrix to know about the availability of this material by product line.



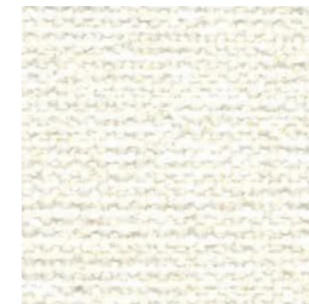
21



10



12



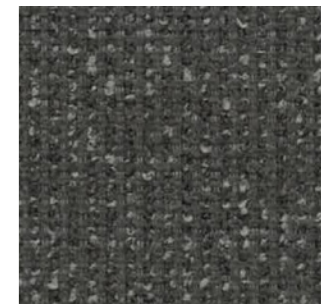
15



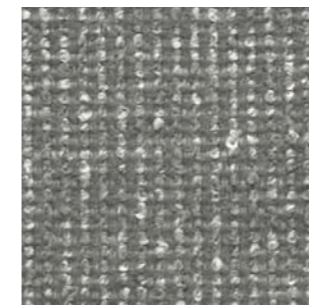
1



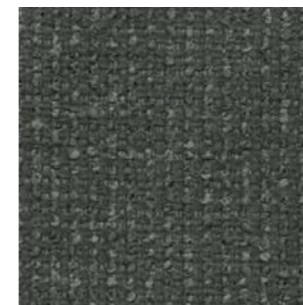
3



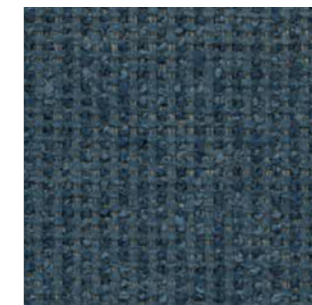
50



6



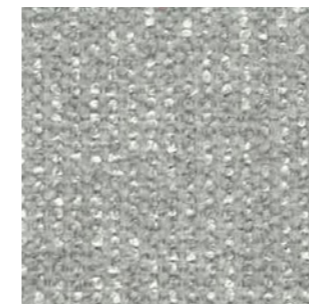
80



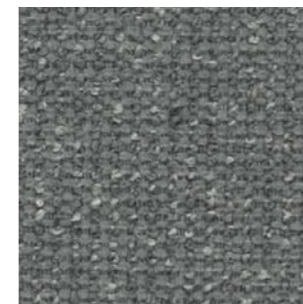
7



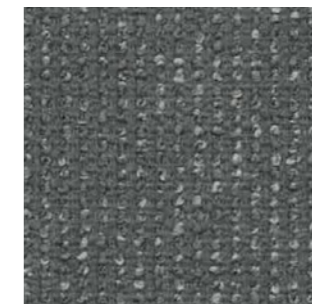
70



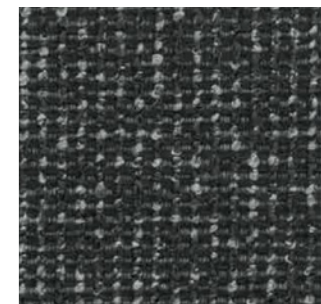
9



19



29



90

G2 - ARS

TECHNICAL DATA

Composition:

100% polyester.

Light fastness:

5, ISO 105 B02, Method 2.

Abrasion:

90.000 Martindale EN ISO 12947-2.

Resistance to pilling:

4 - 5, ISO 12945-2.

Rubbing fastness in humid state:

5, ISO 105-X12.

Rubbing solvents:

4 - 5, ISO 105-X12.

Seam strength:

Warp 3,7mm.

Weft 4,0mm, EN ISO 13936-2.

Seam strength:

Warp 75,6N.

Weft 65,1N, EN ISO 13937-3.

Flammability:

EN 1021 - 1 (cigarette).

Environment:

OEKO-TEX® Standard 100.

Width: 140cm

Weight: 250gr/m²



***Batch to batch variations may occur within commercial tolerances.



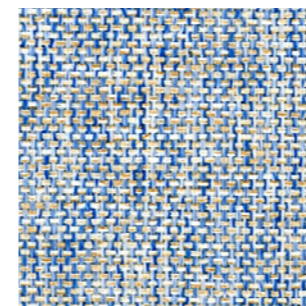
Note:

- The real colours and tones of the fabrics may differ from the digital image due to the scan process and the colour calibration of the different screens. Always request real fabric samples before ordering.

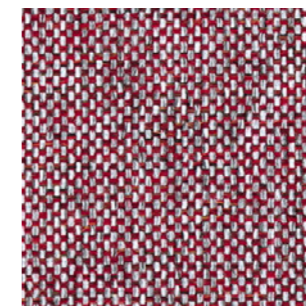
- Consult our Fabric and Leather Matrix to know about the availability of this material by product line.



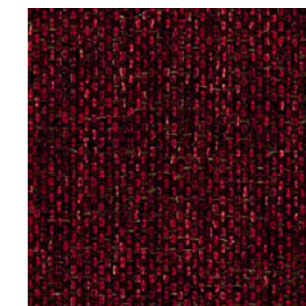
90



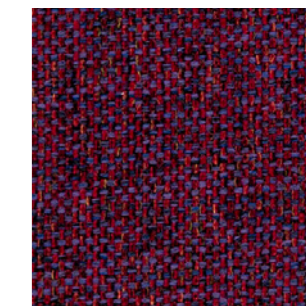
74



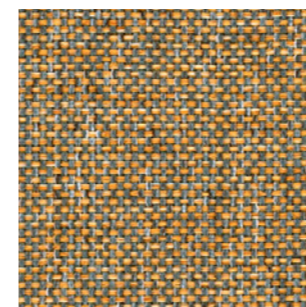
27



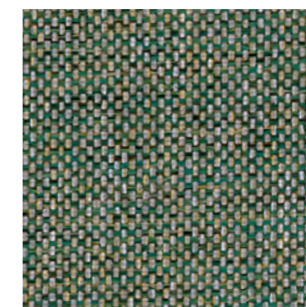
59



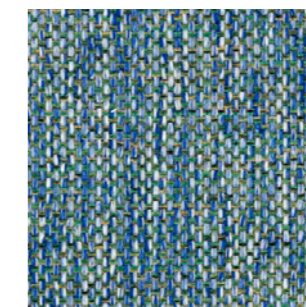
68



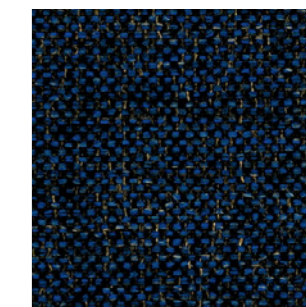
45



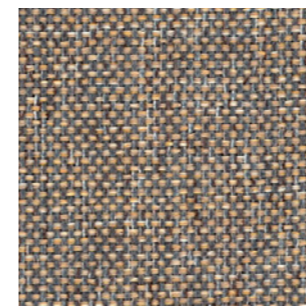
35



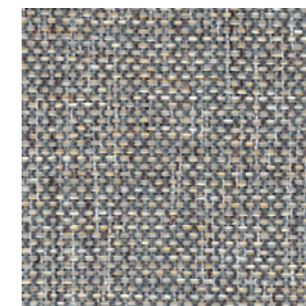
75



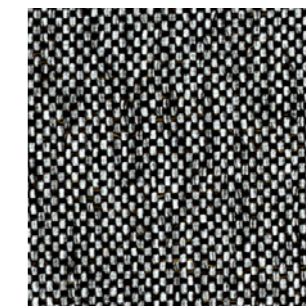
79



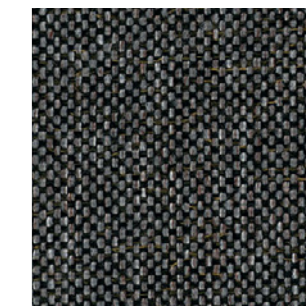
87



88



98



99

G2 - PIXEL

TECHNICAL DATA

Composition:

100% polyolefin.

Light fastness:

5 - 6, UNE-EN ISO 105-B02. Method 2.

Abrasion:

40.000 Martindale EN ISO 12947-2.

Resistance to pilling:

4 - 5, UNE-EN 12945-2.

Dye fastness to rubbing:

Wet 4 - 5.

Dry 4 - 5, UNE-EN ISO 105-X12.

Tear Resistance:

Warp 120N.

Weft 130N UNE-EN ISO 13937-3.

Flammability:

EN 1021-1 (cigarette)

BS 5852-0 (cigarette)

CAL TB 117 Section 1.

NFPA 260 Clase 1.

Width: 140cm

Weight: 255gr/m²



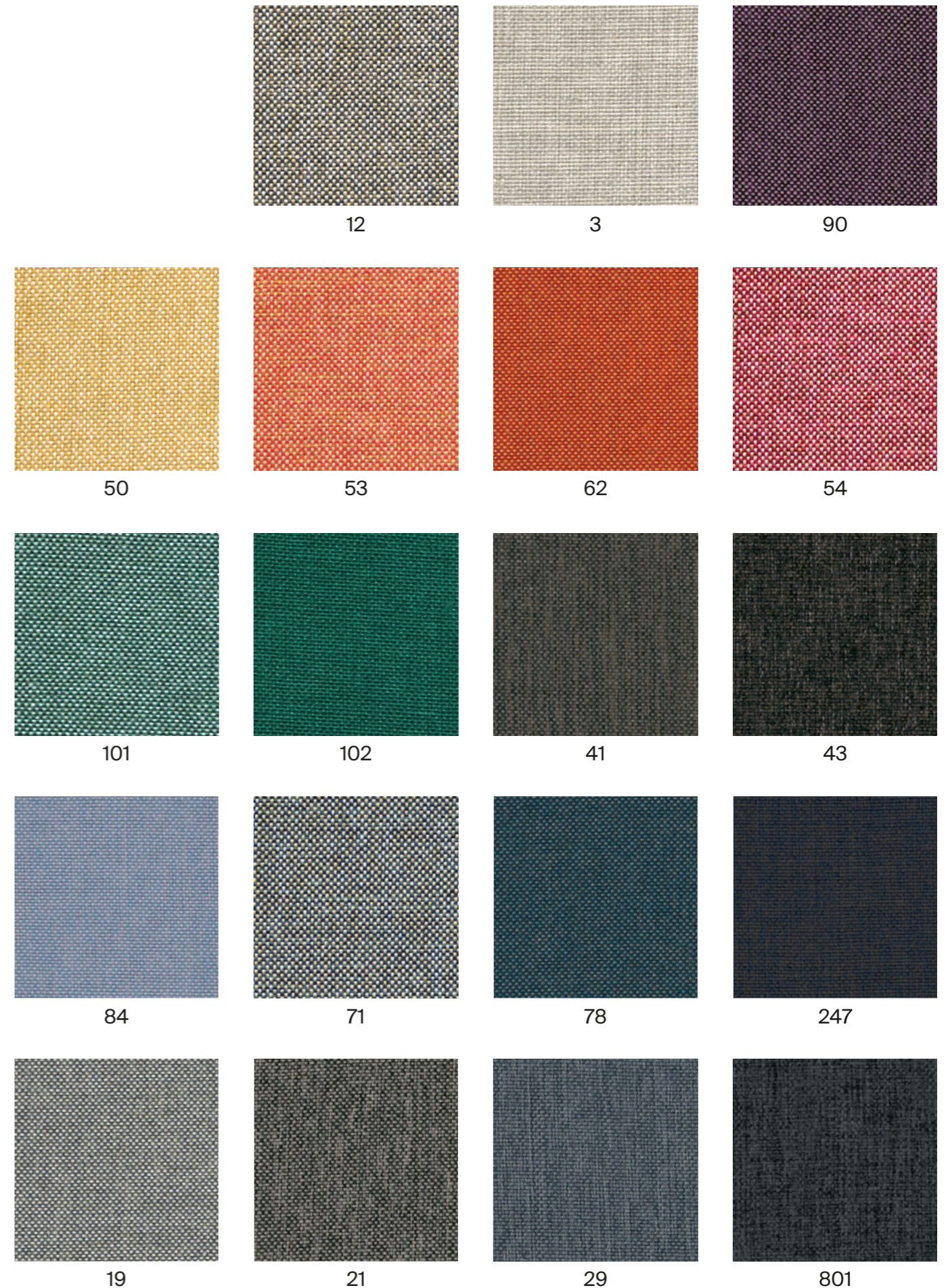
***Batch to batch variations may occur within commercial tolerances.



Note:

- The real colours and tones of the fabrics may differ from the digital image due to the scan process and the colour calibration of the different screens. Always request real fabric samples before ordering.

- Consult our Fabric and Leather Matrix to know about the availability of this material by product line.



G2 - CORA

TECHNICAL DATA

Composition:
100% polyester.

Light fastness:
5 EN ISO 105-B02, Method 2.

Abrasion:
83.000 Martindale EN ISO 12947-1, 2.

Resistance to pilling:
4, EN ISO 12945-2.

Rubbing fastness in humid state:
5, ISO 105-X12.

Rubbing solvents:
5, ISO 105-X12.

Seam strength:
Warp 2,5mm.
Weft 3,7mm, ISO 13936-2.

Tear strength:
Warp exceed 154,2N.
Weft exceed 112,3N, EN ISO 13937-3.

Width: 140cm
Weight: 330gr/m²



***Batch to batch variations may occur within commercial tolerances.



Note:
- The real colours and tones of the fabrics may differ from the digital image due to the scan process and the colour calibration of the different screens. Always request real fabric samples before ordering.
- Consult our Fabric and Leather Matrix to know about the availability of this material by product line.



G2 - HILTON

TECHNICAL DATA

Composition:
100% polyester.

Light fastness:
4, ISO 105 B02.

Abrasion:
>25.000 Martindale ISO 12947-2.

Resistance to pilling:
4 - 5, ISO 12945-2.

Tear strength:
Warp 63N.
Weft 63N, ISO13937-3.

Dye fastness to rubbing:
Wet 4 - 5. Dry 4 - 5, ISO 105X12.

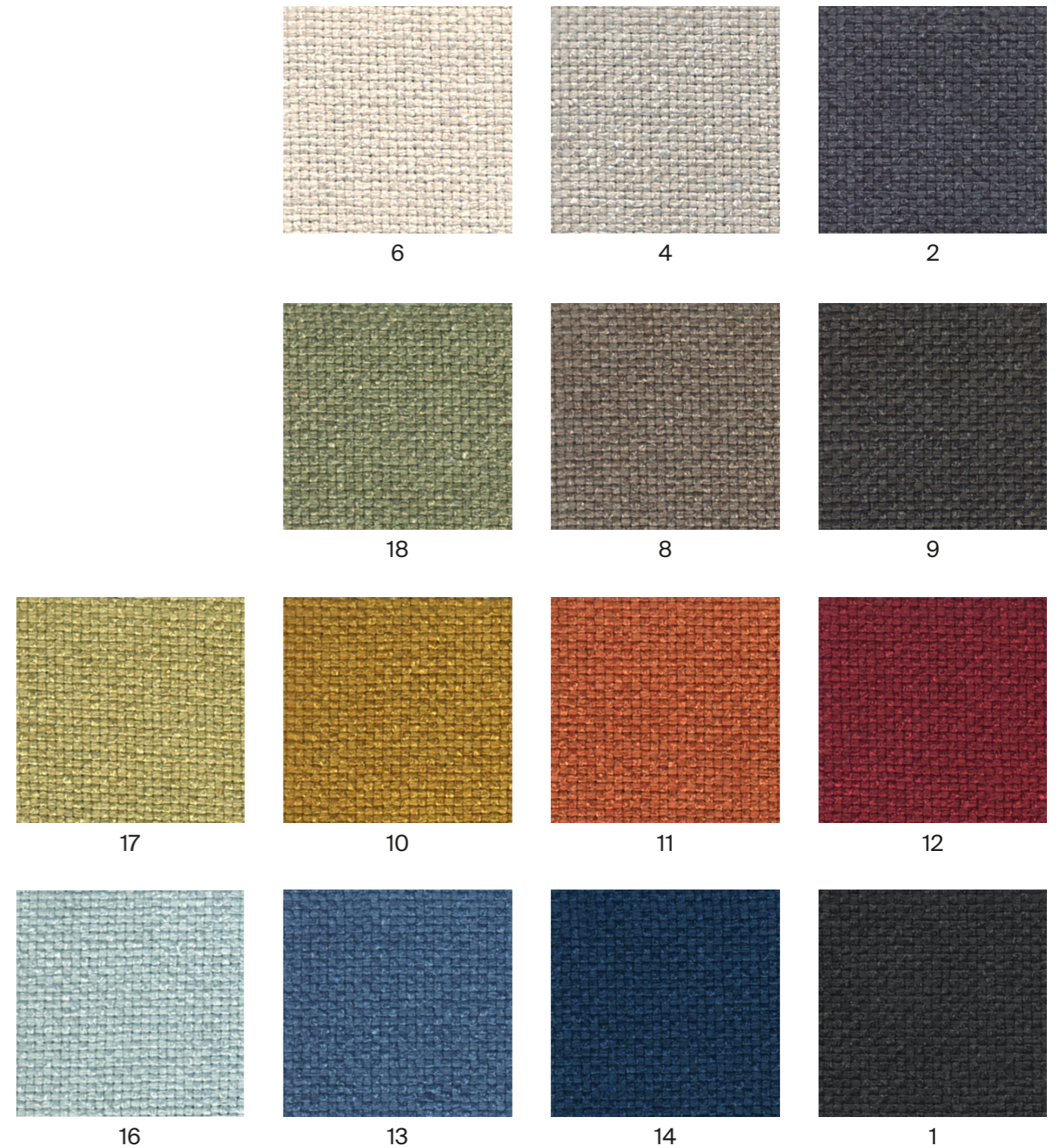
Width: 140cm
Weight: 380gr/m²



***Batch to batch variations may occur within commercial tolerances.



Note:
- The real colours and tones of the fabrics may differ from the digital image due to the scan process and the colour calibration of the different screens. Always request real fabric samples before ordering.
- Consult our Fabric and Leather Matrix to know about the availability of this material by product line.



G2 - ADDO

TECHNICAL DATA

Composition:
80% polyester, 20% cotton.

Light fastness:
5, ISO 105 B02, Method 2.

Abrasion:
40.000 Martindale ISO 12947-1, 2.

Resistance to pilling:
4, ISO 12945-2.

Rubbing fastness in humid state:
3, ISO 105-X12.

Rubbing solvents:
4 - 5, ISO 105-X12.

Seam strength:
Warp 3mm.
Weft 2mm, ISO 13936-2.

Tear strength:
Warp exceed 175,1N.
Weft exceed 120,7N, EN ISO 13937-3.

Flammability:
EN 1021 - 1 (cigarette).

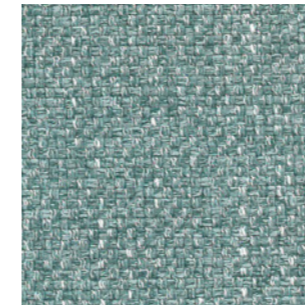
Width: 140cm
Weight: 365gr/m²



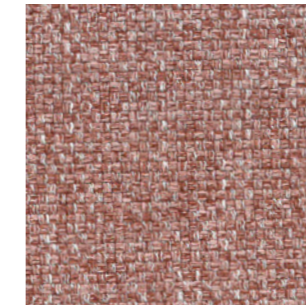
***Batch to batch variations may occur within commercial tolerances.



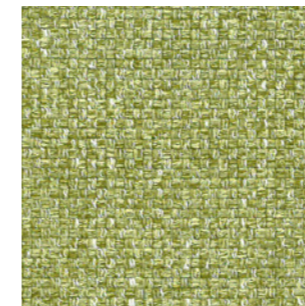
Note:
- The real colours and tones of the fabrics may differ from the digital image due to the scan process and the colour calibration of the different screens. Always request real fabric samples before ordering.
- Consult our Fabric and Leather Matrix to know about the availability of this material by product line.



12



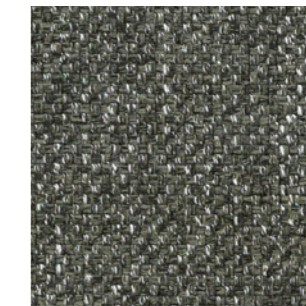
10



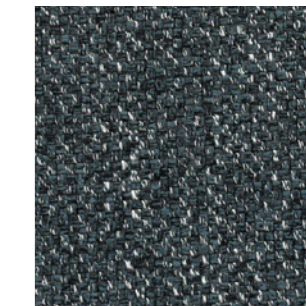
14



15



16



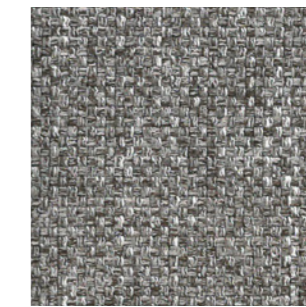
11



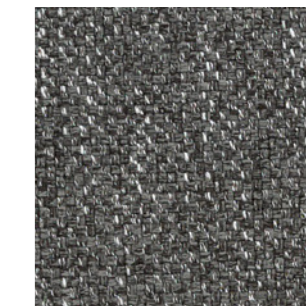
5



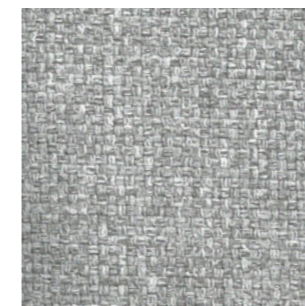
6



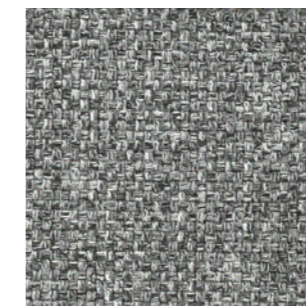
7



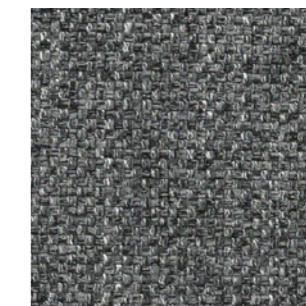
8



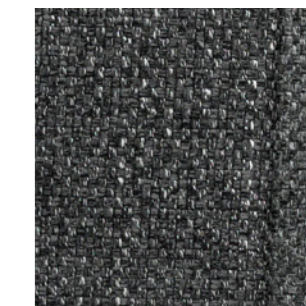
4



3



30



1

G3 - APTA ^{NEW}

TECHNICAL DATA

Composition:
71% polyester, 18% modacrylic, 8% recycled cotton, 3% polyamide.

Light fastness:
4 - 5, ISO 105 B02.

Abrasion:
60.000 Martindale ISO 12947.

Resistance to pilling:
5, ISO 12945-2.

Fastness to rubbing:
4 - 5, ISO 105-X12.

Tensile strength:
>350N, ISO 13934-1.

Tear strength:
>20N, BS 4303.
>3N, DIN 53859-5.

Flammability:
EN 1021 - 1 (cigarette).
EN 1021 - 2 (match).
BS 5852 (cigarette).

Environment:
Oeko-Tex® standard 100.

Characteristics:
Anti-stain protection.
Antibacterial and virus protection protection.

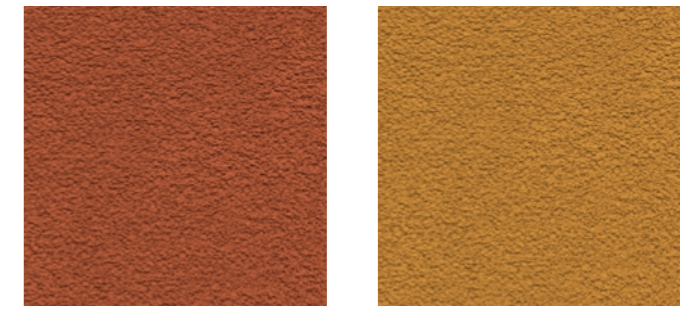
Width: ±140cm
Weight: ±518gr/m



***Batch to batch variations may occur within commercial tolerances.

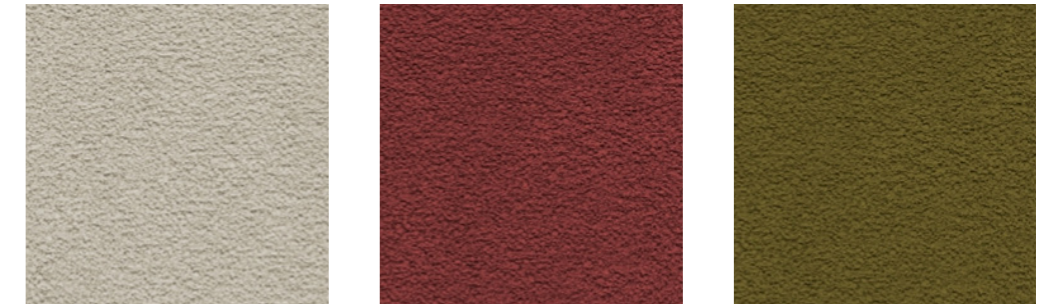


Note:
- The real colours and tones of the fabrics may differ from the digital image due to the scan process and the colour calibration of the different screens. Always request real fabric samples before ordering.
- Consult our Fabric and Leather Matrix to know about the availability of this material by product line.



62

625



156

266

618



324

80

111

43



336

13

271

339



602

11

60

15

G3 - CURA ^{NEW}

TECHNICAL DATA

Composition:

98% recycled polyester, 2% polyester.

Light fastness:

5 - 8, ISO 105 B02.

Abrasion:

100.000 Martindale ISO 12947-2.

Resistance to pilling:

4 - 5, ISO 12945-2.

Fastness to rubbing:

Wet 4 - 5.

Dry 4 - 5, ISO 105-X12.

Flammability:

EN 1021 - 1 (cigarette).

EN 1021 - 2 (match).

CA TB 117-2013.

ASTM E 84 Class 1.

Environment:

Oeko-Tex® standard 100.

Complies with EU Ecolabel.

Width: ±140cm

Weight: ±420gr/m²



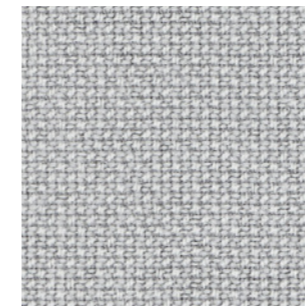
***Batch to batch variations may occur within commercial tolerances.



Note:

- The real colours and tones of the fabrics may differ from the digital image due to the scan process and the colour calibration of the different screens. Always request real fabric samples before ordering.

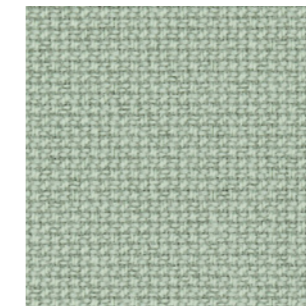
- Consult our Fabric and Leather Matrix to know about the availability of this material by product line.



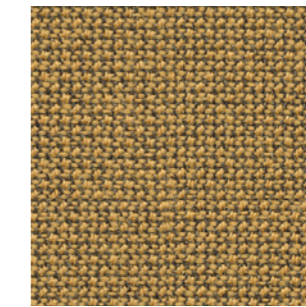
60000



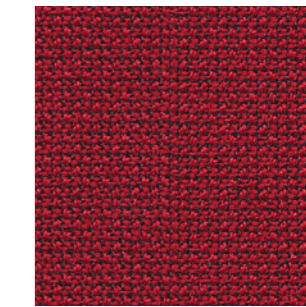
61232



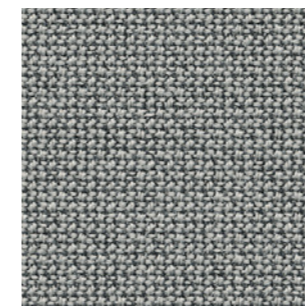
68262



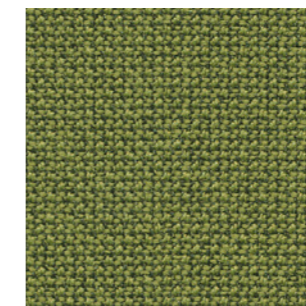
62083



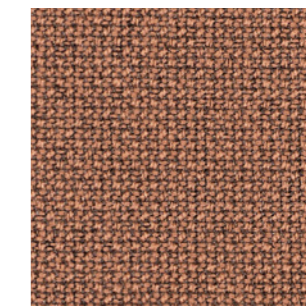
64013



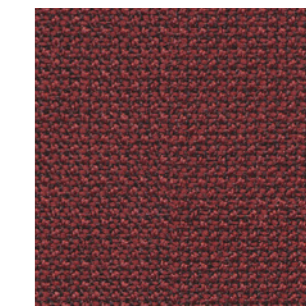
60112



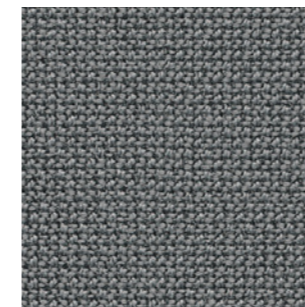
68181



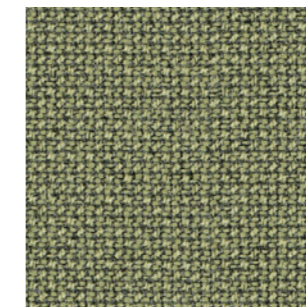
61257



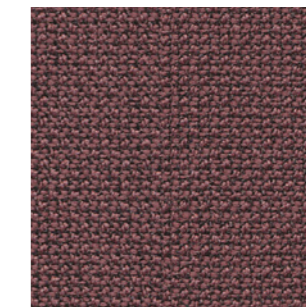
64196



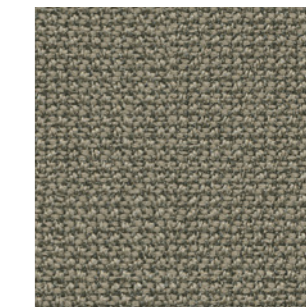
60110



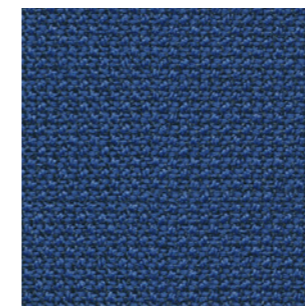
68261



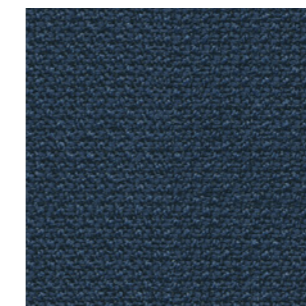
64195



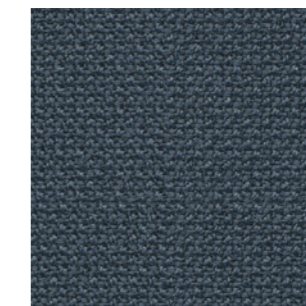
61169



65105



66170



66166



60999

G3 - IBER ^{NEW}

TECHNICAL DATA

- Composition:**
69% PES, 30% cotton, 1% polyamide.
- Light fastness:**
4 - 5, ISO 105 B02.
- Abrasion:**
70.000 Martindale ISO 12947 - BS 2543.
- Resistance to pilling:**
4 - 5, ISO 12945-2.
- Fastness to rubbing:**
Wet 4 - 5.
Dry 4.
- Seam splingge:**
Warp <3mm.
Weft <4mm.
- Flammability:**
BS 5852 Part 1.
- Environment:**
Oeko-Tex® standard 100.

Width: ±140cm
Weight: ±570gr/m²



***Batch to batch variations may occur within commercial tolerances.



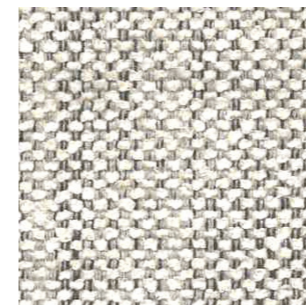
Note:
- The real colours and tones of the fabrics may differ from the digital image due to the scan process and the colour calibration of the different screens. Always request real fabric samples before ordering.
- Consult our Fabric and Leather Matrix to know about the availability of this material by product line.



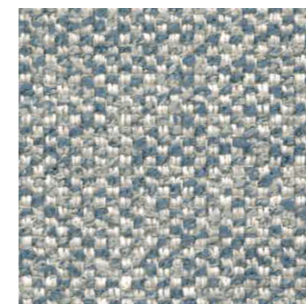
01



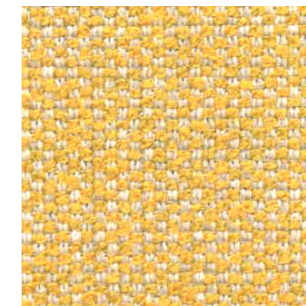
09



19



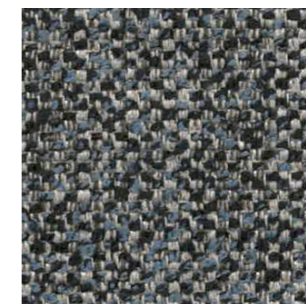
07



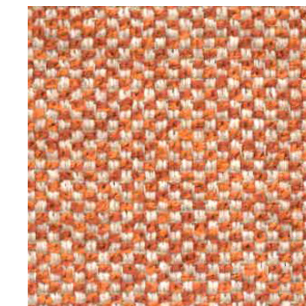
10



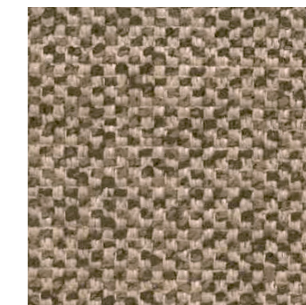
04



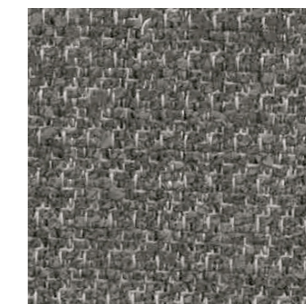
37



14



55



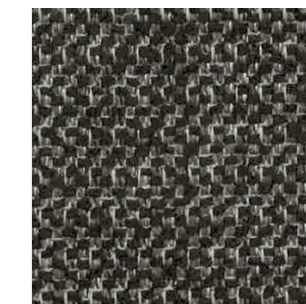
91



18



38



90

G3 - CALMA

TECHNICAL DATA

Composition:

Topcoat: 70% Vinyl, 30% PU.
 Backing: 100% Microfiber Polyester.

Light fastness:

>4.

Abrasion:

>100.000 Martindale.

Breaking strength:

Warp >180N.
 Weft >330N, ISO 1421.

Tear strength:

Warp >25N/cm.
 Weft >28N/cm, ISO 4674-1.

Flex Bally:

>100.000 cycles.

Width: 140cm.

Weight: 853gr/m².



***Batch to batch variations may occur within commercial tolerances.

Note:

- The real colours and tones of the fabrics may differ from the digital image due to the scan process and the colour calibration of the different screens. Always request real fabric samples before ordering.
- Consult our Fabric and Leather Matrix to know about the availability of this material by product line.



G3 - RIVET

By Camira

TECHNICAL DATA

Composition:
100% REPREVE® recycled polyester.

Light fastness:
6, EN ISO 105-B02, Method 3.

Abrasion:
≥80.000 Martindale EN ISO 12947-2.

Fastness to rubbing:
Wet 4.
Dry 4, ISO 105 X12.

Flammability:
EN 1021 - 1 (cigarette).
EN 1021 - 2 (match).
BS 7176 Low Hazard.
UNI 9175 Class 1 IM.

Environment:
Complies with EU Ecolabel.
Certificate Indoor Advantage™ Gold.

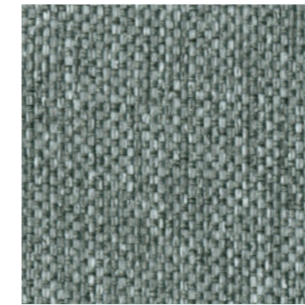
Width: 140cm
Weight: 280gr/m²



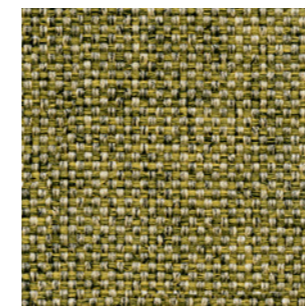
***Batch to batch variations may occur within commercial tolerances.



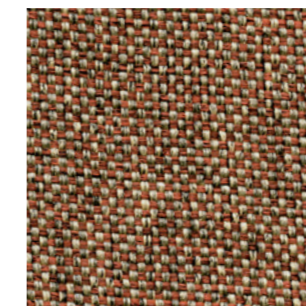
Note:
- The real colours and tones of the fabrics may differ from the digital image due to the scan process and the colour calibration of the different screens. Always request real fabric samples before ordering.
- Consult our Fabric and Leather Matrix to know about the availability of this material by product line.



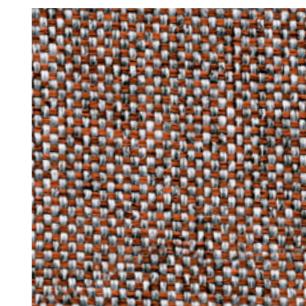
26



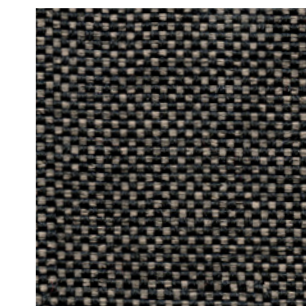
10



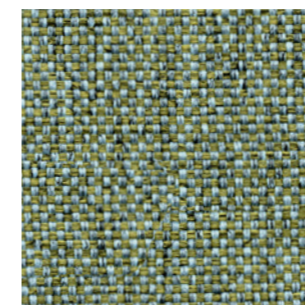
14



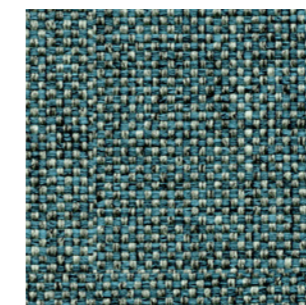
09



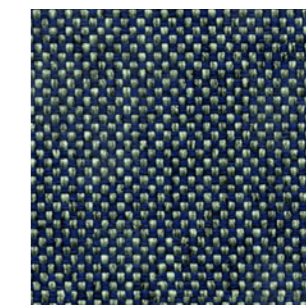
36



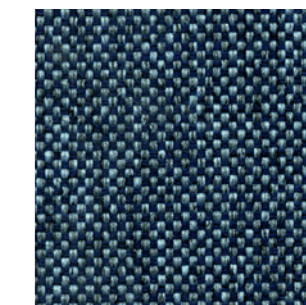
11



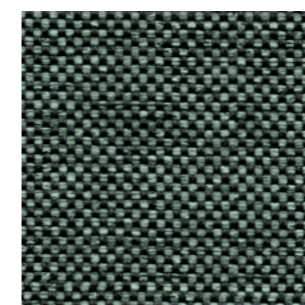
21



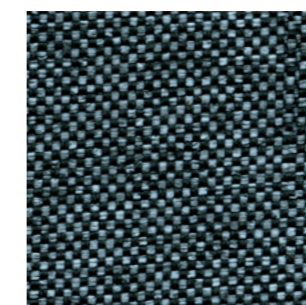
27



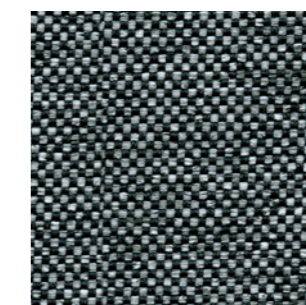
24



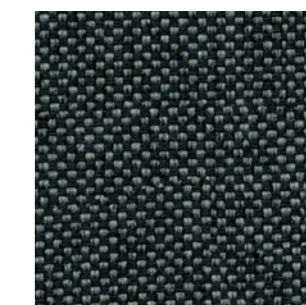
34



48



50



37

G3 - ERA

By Camira

TECHNICAL DATA

Composition:

100% polyester.

Light fastness:

5, EN ISO 105 B02.

Abrasion:

≥100.000 Martindale EN ISO 12947.

Fastness to rubbing:

Wet 4.

Dry 4, ISO 105 X12.

Flammability:

EN 1021 - 1 (cigarette).

EN 1021 - 2 (match).

BS 7176 Low Hazard.

EN 13501-1 Adhered Class B, s1, d0.

EN 13501-1 Un-adhered Class C, s1, d0.

Environment:

OEKO-TEX® Standard 100.

Certificate Indoor Advantage™ Gold.

Width: 140cm

Weight: 320gr/m²



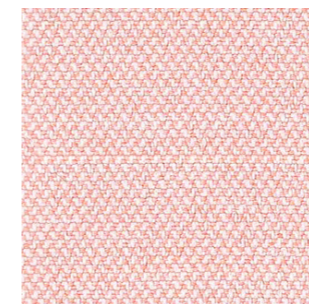
***Batch to batch variations may occur within commercial tolerances.



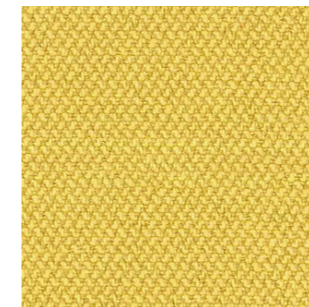
Note:

- The real colours and tones of the fabrics may differ from the digital image due to the scan process and the colour calibration of the different screens. Always request real fabric samples before ordering.

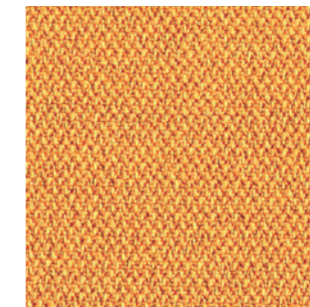
- Consult our Fabric and Leather Matrix to know about the availability of this material by product line.



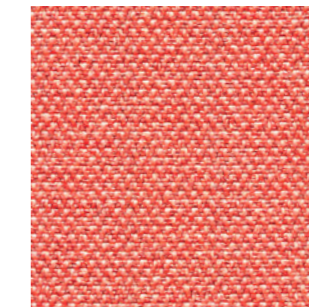
19



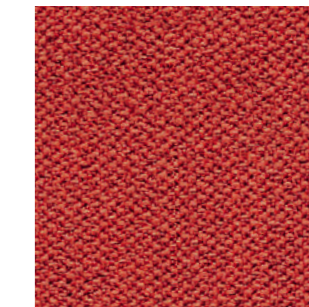
3



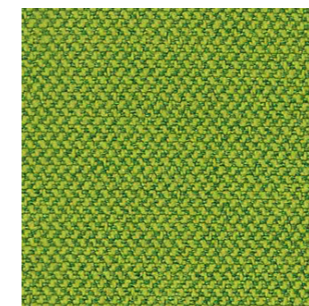
27



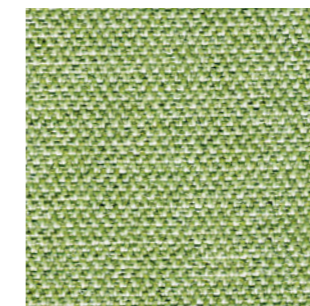
26



29



16



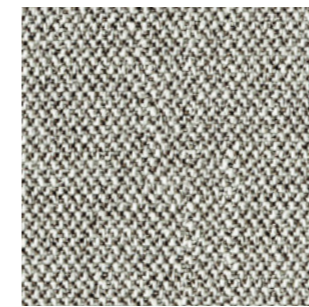
34



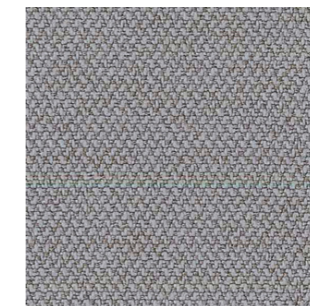
1



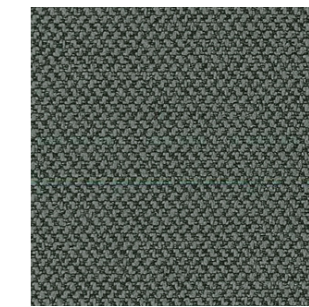
2



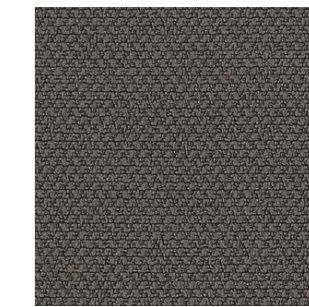
45



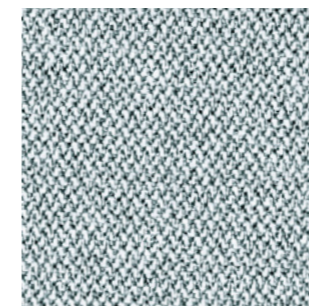
11



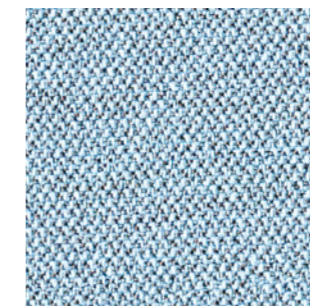
13



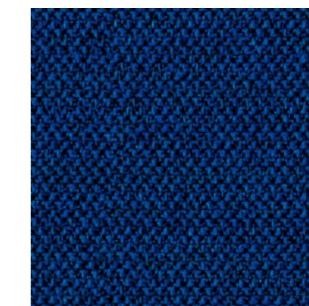
21



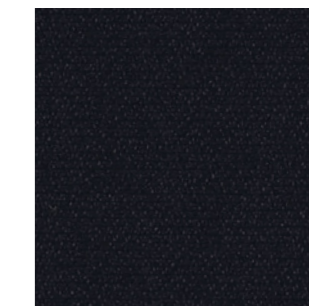
46



39



40



14

G3 - MEDLEY

By Gabriel

TECHNICAL DATA

Composition:

100% polyester.

Light fastness:

5 - 7, EN ISO 105 B02.

Abrasion:

75.000 Martindale EN ISO 12947-2.

Resistance to pilling:

4, EN ISO 12945-2.

Fastness to rubbing:

Wet 4 - 5.

Dry 4 - 5, ISO 105 X12.

Flammability:

BS EN 1021 1&2 Cigarette and Match.

BS EN 1021-1 Cigarette.

BS 5852 Part 1 0,1 Cigarette and Match.

BS 476 Part 7, class 2.

Class Uno UNI 9174 - UNI 8457.

ÖNORM B 3825-B2-3800-Q1 UK.

CA TB 117.

ASTM E 84.

Environment:

Oeko-Tex® standard 100

100% free of heavy metals.

Width: 140cm

Weight: 510gr/m²



60° shrinkage max. 1%

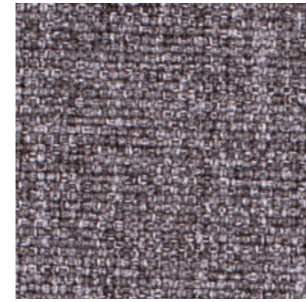
***Batch to batch variations may occur within commercial tolerances.



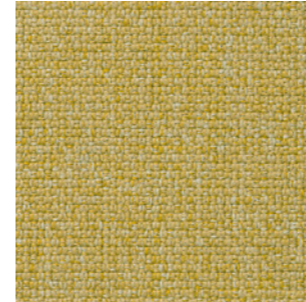
Note:

- The real colours and tones of the fabrics may differ from the digital image due to the scan process and the colour calibration of the different screens. Always request real fabric samples before ordering.

- Consult our Fabric and Leather Matrix to know about the availability of this material by product line.



65011



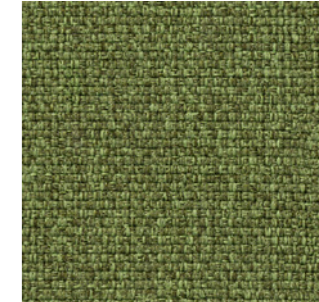
62054



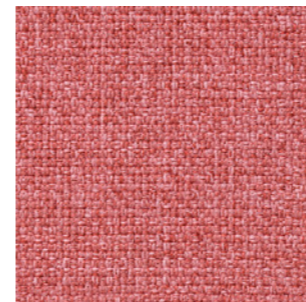
61003



67002



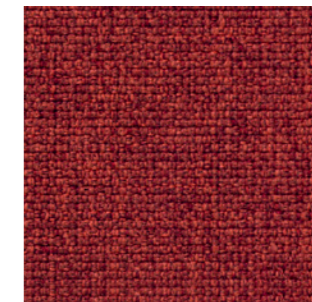
68005



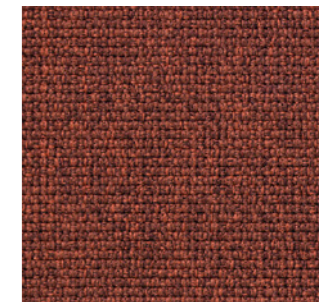
63064



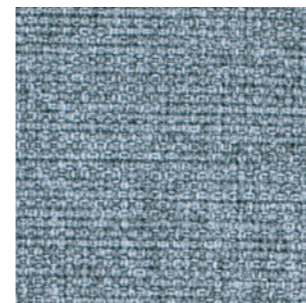
64019



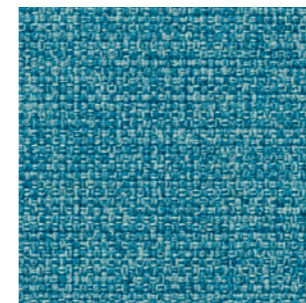
63016



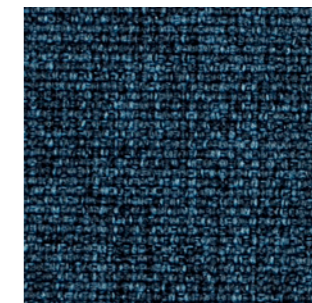
63063



66008



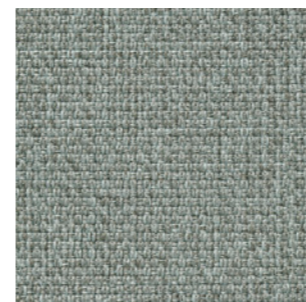
67006



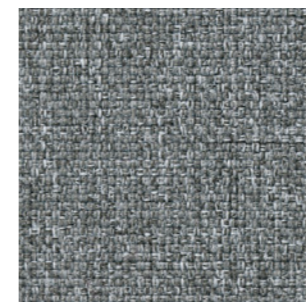
66010



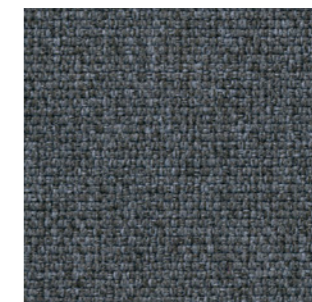
61004



60003



60167



60004



60999

G4 - MAIN LINE FLAX

By Camira

TECHNICAL DATA

Composition:

75% virgin wool, 25% flax.

Light fastness:

5, ISO 105 B02.

Abrasion:

≥50.000 Martindale EN ISO 12947-2:1999.

Resistance to pilling:

4 - 5, ISO 12945-2.

Fastness to rubbing:

Wet 3.

Dry 4, ISO 105 X12.

Flammability:

EN 1021 - 1 (cigarette).

EN 1021 - 2 (match).

BS 7176 Low Hazard.

BS 5852 Ignition source 5.

BS 7176 Medium Hazard.

NF D 60-013.

ÖNORM B 3825 & A 3800-1.

UNI 9175 Class 1 IM.

BS 5867-2: Type B Curtains & Drapes.

IMO FTP Code (Part 8).

Environment:

Complies with EU Ecolabel.

Certificate Indoor Advantage™ Gold.

Width: 140cm

Weight: 437gr/m²



***Batch to batch variations may occur within commercial tolerances.



Note:

- The real colours and tones of the fabrics may differ from the digital image due to the scan process and the colour calibration of the different screens. Always request real fabric samples before ordering.

- Consult our Fabric and Leather Matrix to know about the availability of this material by product line.



G4 - CONNECT

By Gabriel

TECHNICAL DATA

Composition:

48% wool, 41% recycled polyester, 9% polyamide, 2% polyester.

Light fastness:

5 - 7, ISO 105 B02.

Abrasion:

90,000 Martindale EN ISO 12947-2.

Resistance to pilling:

4 - 5, ISO 12945-2.

Fastness to rubbing:

Wet 4 - 5.

Dry 4 - 5, ISO 105 X12.

Flammability:

EN 1021 - 1 (cigarette).

EN 1021 - 2 (match).

BS 5852 Crib 5.

CA TB 117-2013.

Class Uno UNI 9175 Class 1 | EMME.

Environment:

Oeko-Tex® standard 100.

Complies with EU Ecolabel.

Width: 140cm

Weight: 370gr/m²



***Batch to batch variations may occur within commercial tolerances.

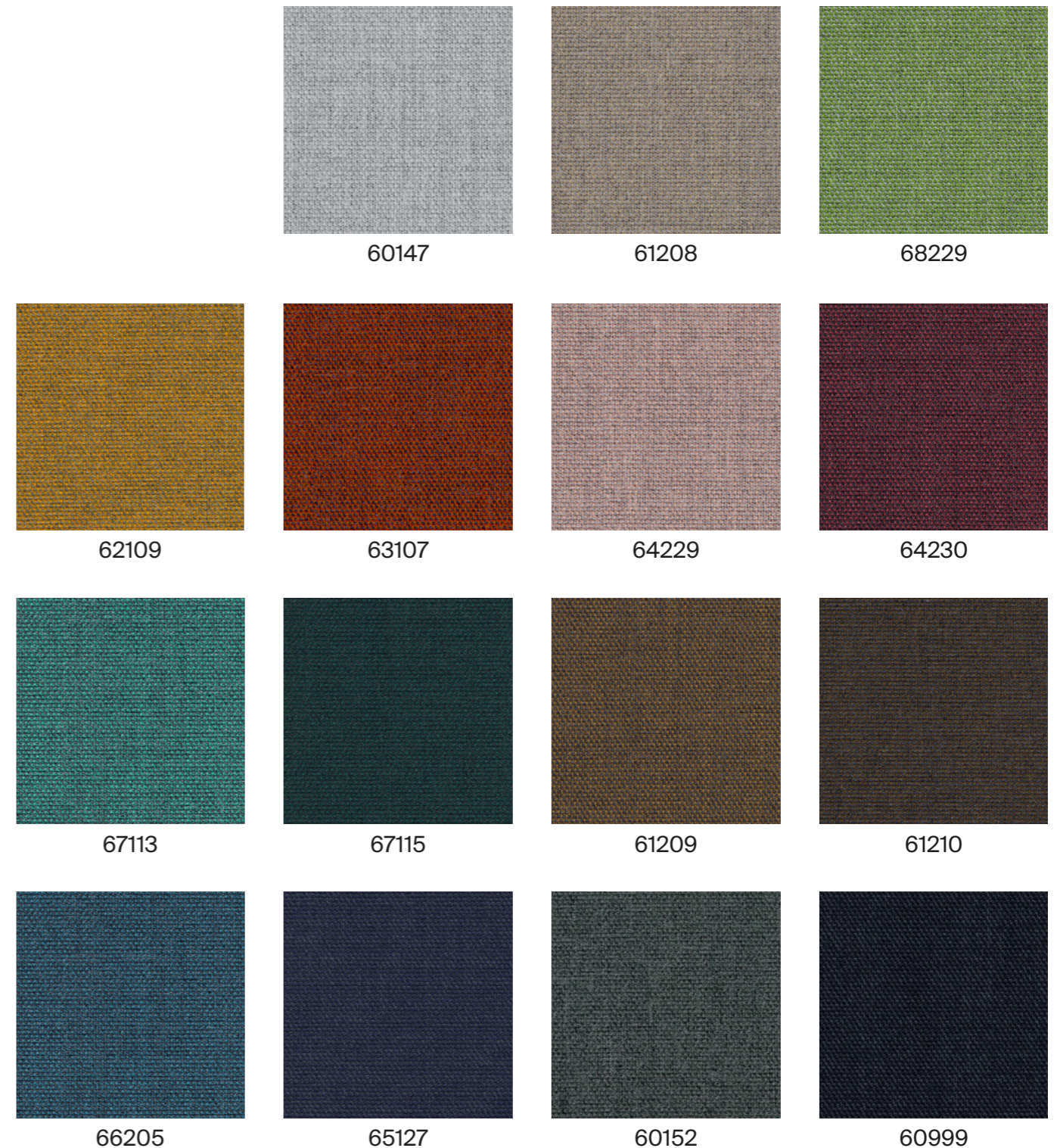


41% recycled material
Post Consumer Recycled Polyester

Note:

- The real colours and tones of the fabrics may differ from the digital image due to the scan process and the colour calibration of the different screens. Always request real fabric samples before ordering.

- Consult our Fabric and Leather Matrix to know about the availability of this material by product line.



G4 - VALENCIA

By Spradling

TECHNICAL DATA

Composition:

Topcoat: 100% Vinyl.
 Backing: 100% Polyester Hi-Loft²™.

Light fastness:

1000 hours, XENOTEST DIN 54004/NTC 1479.

Abrasion:

300.000 cycles de Martindale EN ISO 12947 Part 2.

Cold crack resistance:

-23°C.

Characteristics:

Antimicrobial protection.
 Antibacterial protection.
 Antimycotic protection.

Flammability:

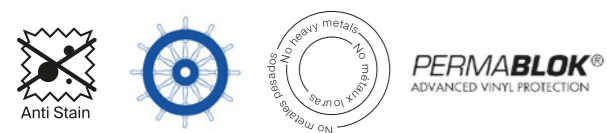
EU: EN 1021 Part 1 y 2.
 ES: UNE 23.727-90 1R/M.2.
 FR: NF P 92-503/M2.
 DE: DIN 4102 B2.
 IT: UNI 9175 (1987) / UNI 9175/FA1 (1994) Classe 1.IM (UNO I EMME).
 AT: ÖNORM B 3825, Gruppe 1 - Schwerbrennbares Verhalten.
 AT: ÖNORM A 3800 Teil 1, Qualmbildungsklasse Q1 - schwachqualmend.
 IMO FTP 2010 Code MSC.307 (88) Part 8 3.1 & 3.2.
 US: FMVSS 302.
 US: FAR 25/853.
 (MED) Marine Equipment Directive.
 ECE R118.02 (replaces Directive 95/28/CE) Annexes 6, 7 & 8.
 EN 71-2:2006+A1:2007 - Toy safety - Parte 2: Inflammability.

Width: 140cm

Weight: 685gr/m²



***Batch to batch variations may occur within commercial tolerances.



Note:

- The real colours and tones of the fabrics may differ from the digital image due to the scan process and the colour calibration of the different screens. Always request real fabric samples before ordering.
- Consult our Fabric and Leather Matrix to know about the availability of this material by product line.



G4 - STEP ^{NEW}

By Gabriel

TECHNICAL DATA

Composition:

100% trevira CS.

Light fastness:

5 - 7, ISO 105 B02.

Abrasion:

100.000 Martindale EN ISO 12947.

Resistance to pilling:

4 - 5, ISO 12945-2.

Fastness to rubbing:

Wet 4 - 5. - Dry 4 - 5, ISO 105 X12.

Flammability:

IMO MSC 307(88) Annex 1 part 8.

MED.

Certificate IMO.

DIN 4102 B1.

NFP 92-503/504/505 M1.

BS EN 1021 1&2 Cigarette and Match.

BS EN 1021-1 Cigarette.

BS 5852 Part 1 0,1 Cigarette and Match.

BS 5852 Crib 5.

ÖNORM B 3825-B1-3800-Q1 UK.

FAR/JAR 25.853 (a) (i) (ii).

BS 7176 Medium hazard.

AM 18 - NF D 60-013-(only for fabric).

CA TB 117-2013.

Class Uno UNI 9175 Class 1 I EMME.

DIN EN 13501-1 B-s1,d0.

Environment:

Oeko-Tex - EU Ecolabel - 100% free of heavy metals.

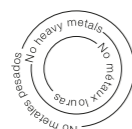
Width: 140cm

Weight: 470gr/m²



60° shrinkage max. 3%

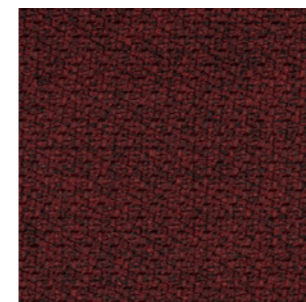
***Batch to batch variations may occur within commercial tolerances.



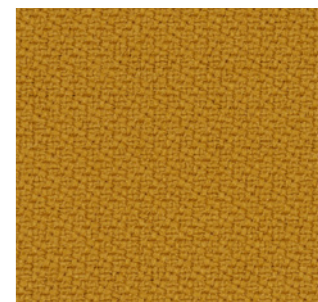
Note:

- The real colours and tones of the fabrics may differ from the digital image due to the scan process and the colour calibration of the different screens. Always request real fabric samples before ordering.

- Consult our Fabric and Leather Matrix to know about the availability of this material by product line.



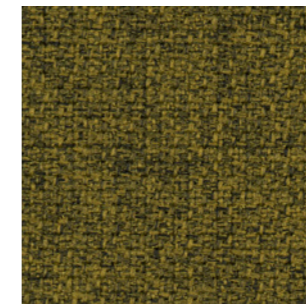
2442 - 64159



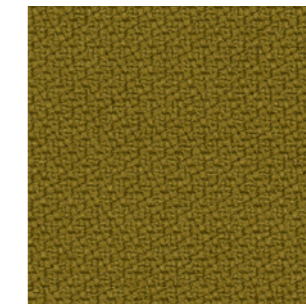
2440 - 62057



2442 - 68301



2442 - 68165



2440 - 68165



2440 - 61149



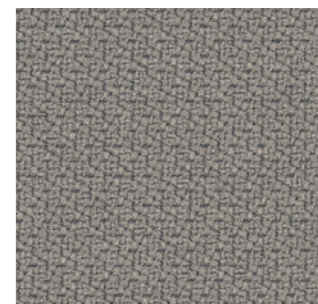
2442 - 60004



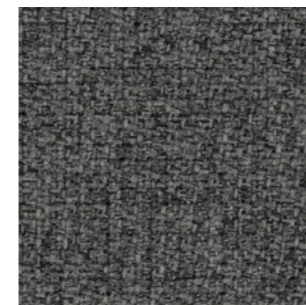
2442 - 67004



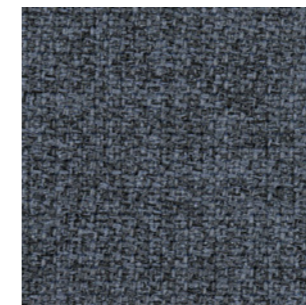
2440 - 60004



2440 - 60011



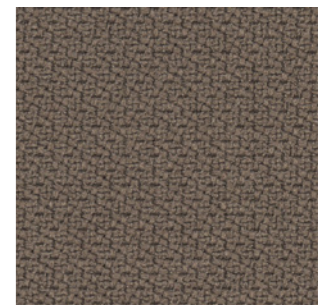
2442 - 60011



2442 - 66152



2440 - 66764



2440 - 60090



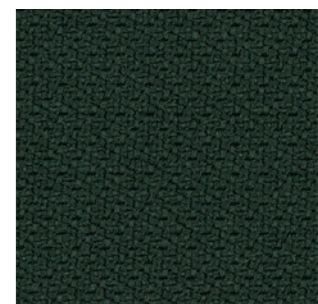
2442 - 61103



2442 - 60021



2440 - 60999



2440 - 68121

G5 - DOLCE

By Spradling

TECHNICAL DATA

Composition:

Topcoat: 100% polyurethane.

Backing: 100% rayon.

Light fastness:

40 hours, XENOTEST DIN 54004/NTC 1479.

Abrasion:

≥300.000 Martindale EN ISO 12947 Part 2.

Cold crack resistance:

-23°C.

Characteristics:

Antibacterial protection.

Flammability:

EU: EN 1021 Part 1 y 2

US: FMVSS 302

UK: BS 5852 Part 2 CRIB 5

IMO FTP 2010 Code MSC.307 (88) Part 8 3.1 & 3.2.

Width: 140cm

Weight: 685gr/m²



***Batch to batch variations may occur within commercial tolerances.

Note:

- The real colours and tones of the fabrics may differ from the digital image due to the scan process and the colour calibration of the different screens. Always request real fabric samples before ordering.

- Consult our Fabric and Leather Matrix to know about the availability of this material by product line.



6703



6706



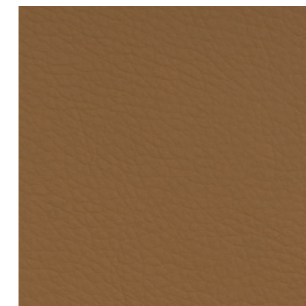
6708



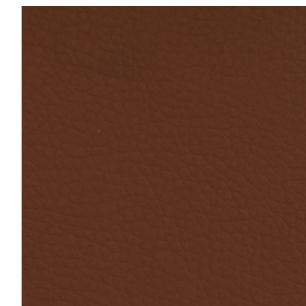
6719



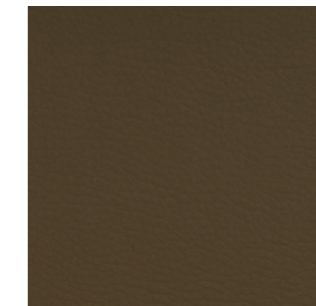
6714



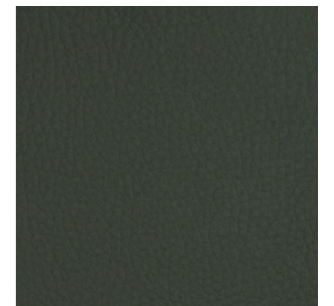
6709



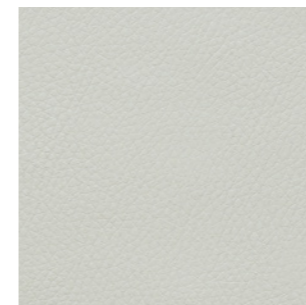
6711



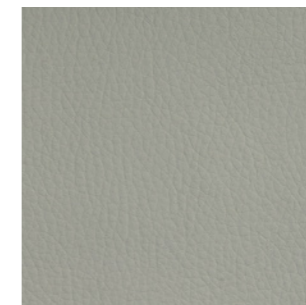
6712



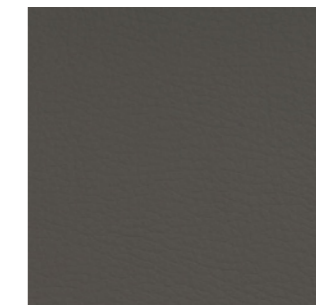
6717



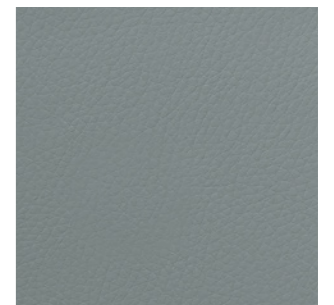
6729



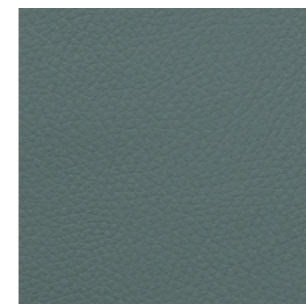
6726



6727



6736



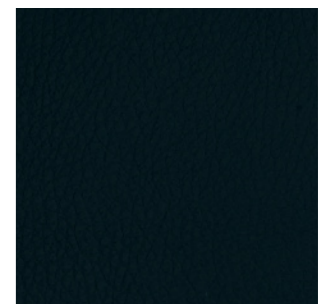
6735



6734



6724



6728

G5 - SYNERGY

By Camira

TECHNICAL DATA

Composition:

95% virgin wool, 5% polyamide.

Light fastness:

5, ISO 105-B02.

Abrasion:

≥100.000 Martindale EN ISO 12947.

Fastness to rubbing:

Wet 4.

Dry 4, ISO 105 X12.

Flammability:

EN 1021 - 1 (cigarette).

EN 1021 - 2 (match).

BS 7176 Low Hazard.

NF D 60-013.

ÖNORM B 3825 & A 3800-1 (sobre 58kg/m³ Foam CMHR).

UNI 9175 Classe 1 IM.

EN 13501-1 Adhered Class D, s1, d0.

EN 13501-1 Un-adhered Class E, s2, d0.

IMO FTP Code (Part 8).

Environment:

Complies with EU Ecolabel.

Certificate Indoor Advantage™ Gold.

Width: 140cm

Weight: 400gr/m²



***Batch to batch variations may occur within commercial tolerances.



Note:

- The real colours and tones of the fabrics may differ from the digital image due to the scan process and the colour calibration of the different screens. Always request real fabric samples before ordering.

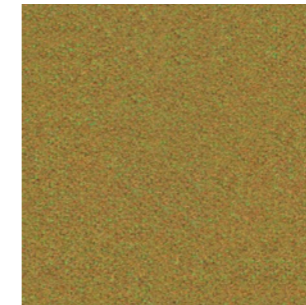
- Consult our Fabric and Leather Matrix to know about the availability of this material by product line.



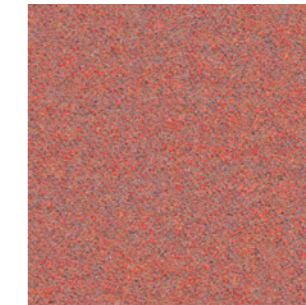
74



45



43



73



84



32



22



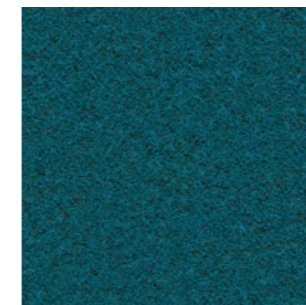
37



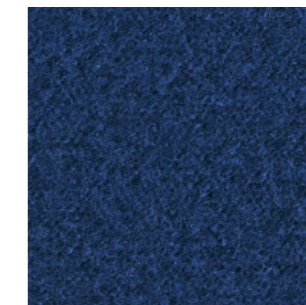
34



49



59



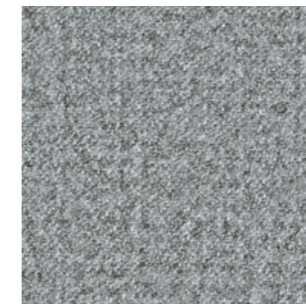
62



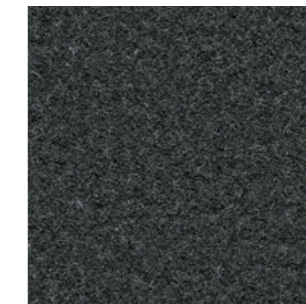
41



8



16



17



27

G5 - REMIX

By Kvadrat

TECHNICAL DATA

Designer:

Giulio Ridolfo.

Composition:

90% new wool, 10% nylon.

Light fastness:

5 - 7, ISO 105-B02.

Abrasion:

100.000 Martindale EN ISO 12947.

Resistance to pilling:

4, EN ISO 12945.

Flammability:

AS/NZS 1530.3.

BS 5852 part 1.

EN 1021-1/2.

IMO FTP Code 2010: Part 8.

NF D 60 013.

NFPA 260.

Önorm B1/Q1.

UNI 9175 1IM.

US Cal. Bull. 117-2013.

Environment:

Complies with EU ecolabel "The Flower".

100% free of heavy metals.

Width: 140cm

Weight: 415gr/m²



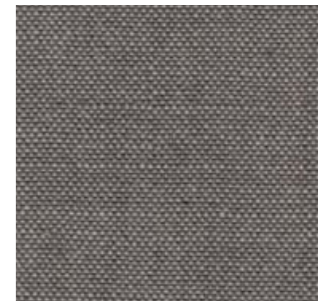
***Batch to batch variations may occur within commercial tolerances.



Note:

- The real colours and tones of the fabrics may differ from the digital image due to the scan process and the colour calibration of the different screens. Always request real fabric samples before ordering.

- Consult our Fabric and Leather Matrix to know about the availability of this material by product line.



136



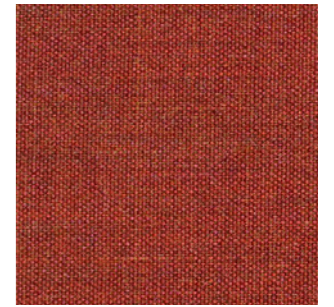
433



452



346



653



326



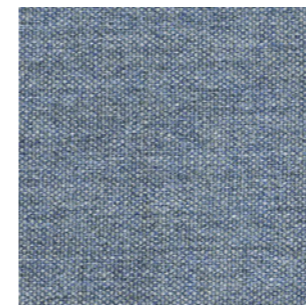
933



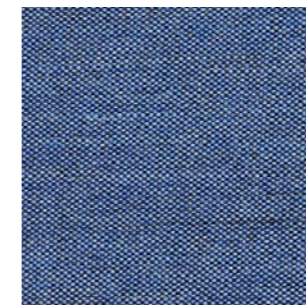
152



356



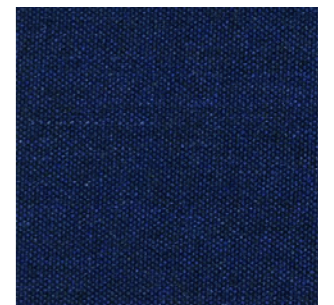
733



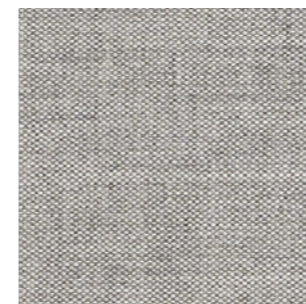
743



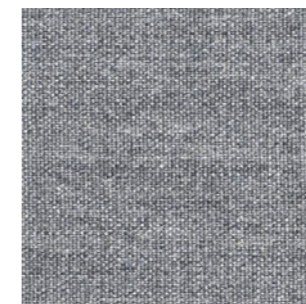
266



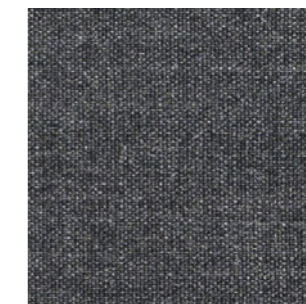
773



123



143



163



183

G5 - CANVAS

By Kvadrat

TECHNICAL DATA

Designer:

Giulio Ridolfo.

Composition:

90% new wool, 10% nylon.

Light fastness:

5 - 7, ISO 105-B02.

Abrasion:

100.000 Martindale EN ISO 12947.

Resistance to pilling:

4 - 5, EN ISO 12945.

Flammability:

AS/NZS 1530.3.

BS 5852 Crib 5 when flameprotected.

BS 5852, ignition source 3.

BS 5852 part 1.

DIN 4102 B2.

IMO FTP Code 2010: Part 8.

NF D 60 013.

NFPA 260.

Önorm B1/Q1.

UNI 9175 1IM.

US Cal. Bull. 117-2013.

Environment:

Complies with EU ecolabel "The Flower".

100% free of heavy metals.

Width: 140cm

Weight: 480gr/m².



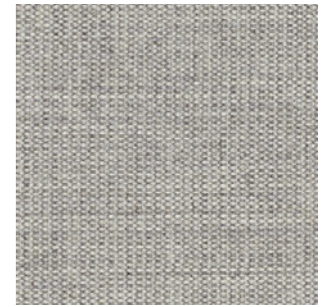
***Batch to batch variations may occur within commercial tolerances.



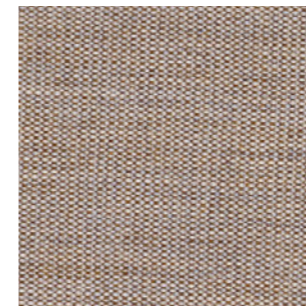
Note:

- The real colours and tones of the fabrics may differ from the digital image due to the scan process and the colour calibration of the different screens. Always request real fabric samples before ordering.

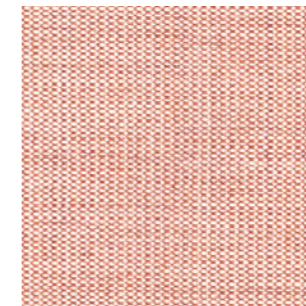
- Consult our Fabric and Leather Matrix to know about the availability of this material by product line.



124



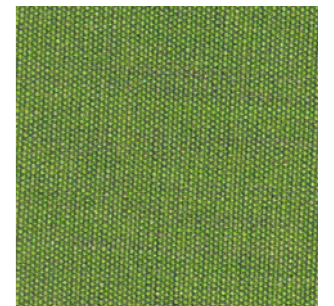
244



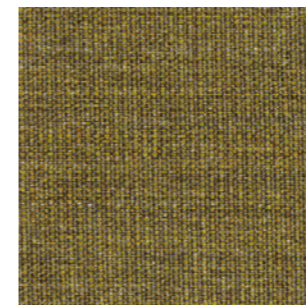
614



654



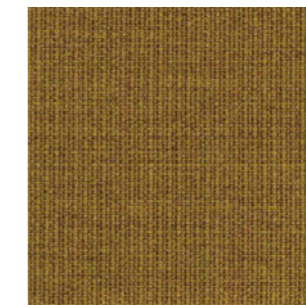
954



964



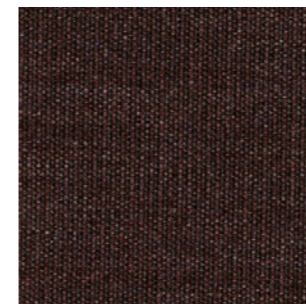
454



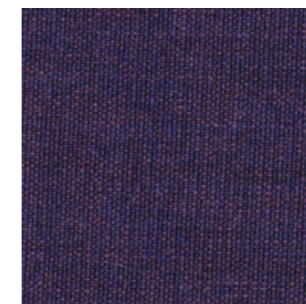
424



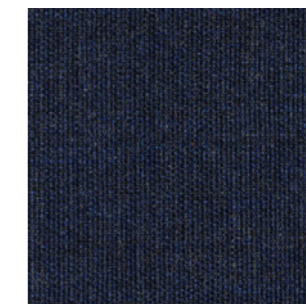
264



364



684



794



174

G6 - STEELCUT TRIO

By Kvadrat

TECHNICAL DATA

Designer:

Frans Dijkmeijer and Giulio Ridolfo.

Composition:

90% new wool, 10% nylon.

Light fastness:

5 - 7 ISO 105-B02.

Abrasion:

100.000 Martindale EN ISO 12947.

Resistance to pilling:

4, EN ISO 12945.

Flammability:

AS/NZS 1530.3

AS/NZS 3837 class 2.

BS 5852 part 1.

DIN 4102 B2.

EN 1021-1/2.

IMO FTP Code 2010: Part 8.

NF D 60 013.

NFPA 260.

Önorm B1/Q1.

UNI 9175 1IM.

US Cal. Bull. 117-2013.

Environment:

Complies with EU ecolabel "The Flower".

100% free of heavy metals.

Width: 140cm

Weight: 770gr/m²



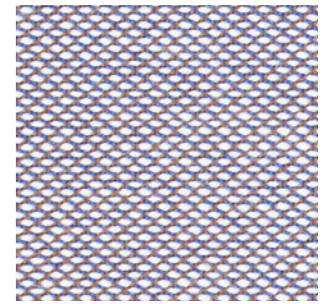
***Batch to batch variations may occur within commercial tolerances.



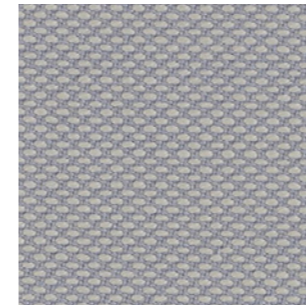
Note:

- The real colours and tones of the fabrics may differ from the digital image due to the scan process and the colour calibration of the different screens. Always request real fabric samples before ordering.

- Consult our Fabric and Leather Matrix to know about the availability of this material by product line.



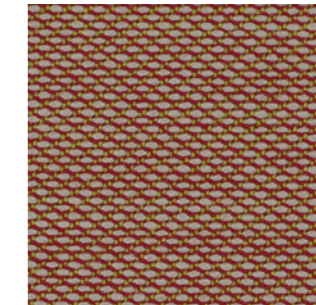
806



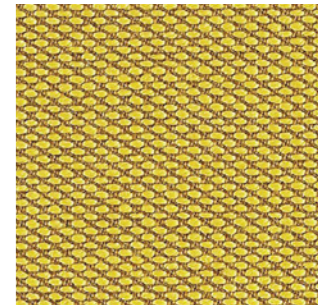
105



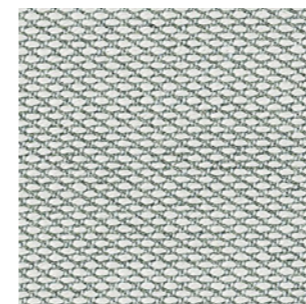
205



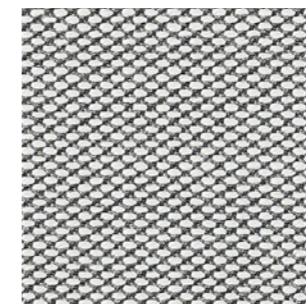
515



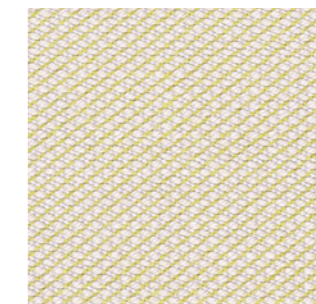
453



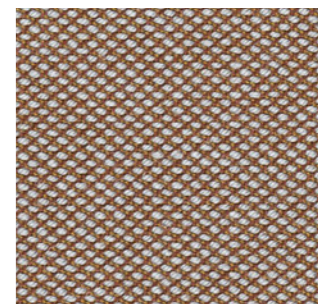
113



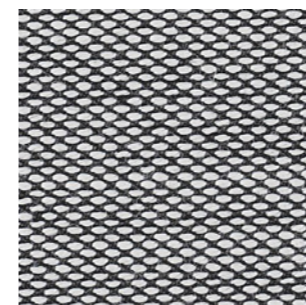
133



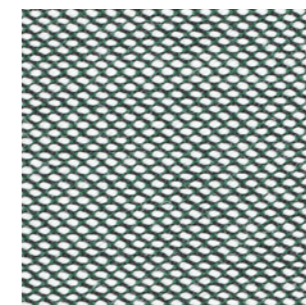
236



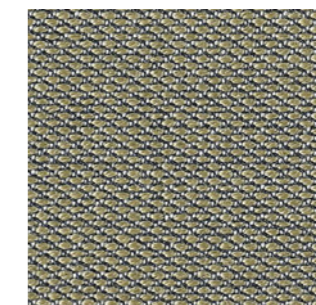
476



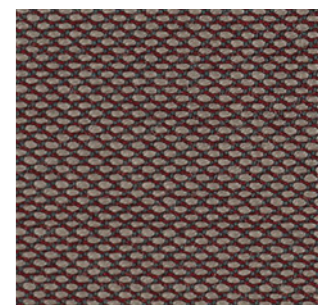
124



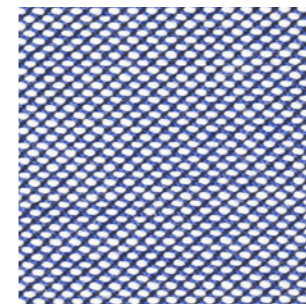
916



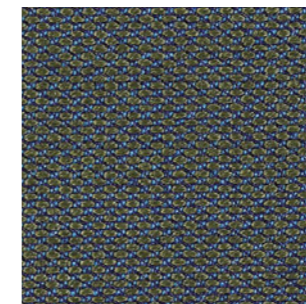
253



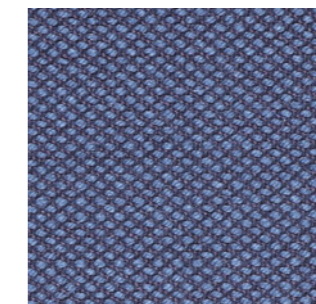
645



716



883



796



383

G6 - FIORD

By Kvadrat

TECHNICAL DATA

Designer:

Louise Sigvardt & Tone Barnung.

Composition:

92% new wool, 8% nylon.

Light fastness:

5 - 7, ISO 105-B02.

Abrasion:

60.000 Martindale EN ISO 12947.

Resistance to pilling:

4 - 5, EN ISO 12945.

Flammability:

- AS/NZS 3837 class 2.
- ASTM E84 Class A Adhered.
- ASTM E84 Class A Unadhered.
- BS 5852 part 1.
- EN 1021-1/2.
- IMO FTP Code 2010:Part 8.
- NF D 60 013.
- NFPA 260
- ÖNORM B1/Q1
- UNI 9175 1IM.
- US Cal. Bull. 117-2013.

Environment:

- Complies with EU ecolabel "The Flower"
- 100% free of heavy metals.

Width: 140cm

Weight: 500gr/m²



***Batch to batch variations may occur within commercial tolerances.

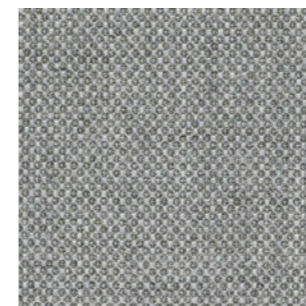


Note:

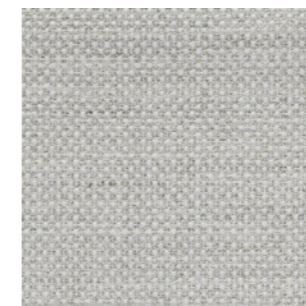
- The real colours and tones of the fabrics may differ from the digital image due to the scan process and the colour calibration of the different screens. Always request real fabric samples before ordering.
- Consult our Fabric and Leather Matrix to know about the availability of this material by product line.



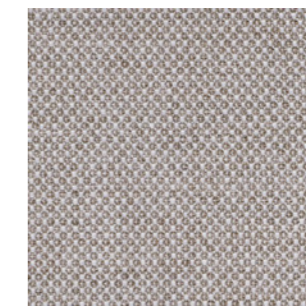
271



151



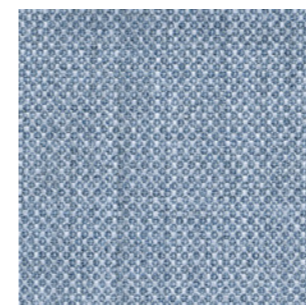
121



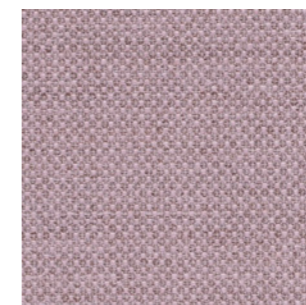
251



451



751



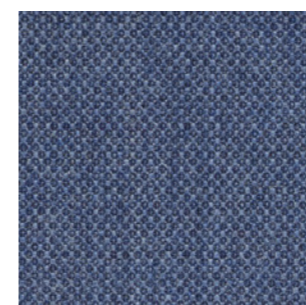
551



951



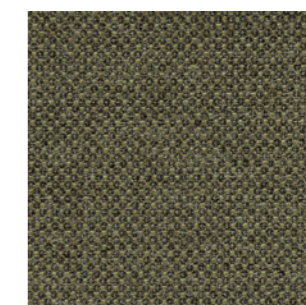
371



771



591



961



191

G7 - HALLINGDAL

By Kvadrat

TECHNICAL DATA

Designer:

Nanna Ditzel.

Composition:

70% new wool, 30% viscose.

Light fastness:

5 - 7 ISO 105-B02.

Abrasion:

100.000 Martindale EN ISO 12947.

Resistance to pilling:

3, EN ISO 12945.

Flammability:

AS/NZS 1530.3.

AS/NZS 3837.

BS 5852 Crib 5.

BS5852 part 1.

DIN 4102 B2.

EN 1021-1/2.

IMO FTP Code 2010: Part 8.

NF D 60 013.

NFPA 260.

Önorm B1/Q1.

UNI 9175 1IM.

US Cal. Bull. 117 - 2013.

Environment:

Complies with EU ecolabel "The Flower".

Width: 140cm

Weight: 795gr/m²



***Batch to batch variations may occur within commercial tolerances.



Note:

- The real colours and tones of the fabrics may differ from the digital image due to the scan process and the colour calibration of the different screens. Always request real fabric samples before ordering.

- Consult our Fabric and Leather Matrix to know about the availability of this material by product line.



G10 - LEATHER

TECHNICAL DATA

Composition:

Cow leather.

Light fastness:

≥4/5, UNI EN ISO 105B02.

Fastness to rubbing:

Wet ≥4 (150 cycles).

Dry ≥4 (500 cycles).

Perspiration ≥4 (80 cycles), UNI EN ISO 11640 - 11641 (pH8).

Tear strength:

>20N, EN ISO 3377-1.

Determination of PH:

>3,5, EN ISO 4045.

Adhesion of the finish:

≥2, UNI EN ISO 11644.

Determination of dry ex resistance:

Without damage, UNI EN ISO 5402.

Flammability:

Ignition source 0 (cigarette).

Ignition source 1 (match).

BS 5852-1979.

BS EN 1021-1-2.

Thickness:

0,9 - 1,1mm

Average surface:

4,8 - 5,0m²

Maintenance:

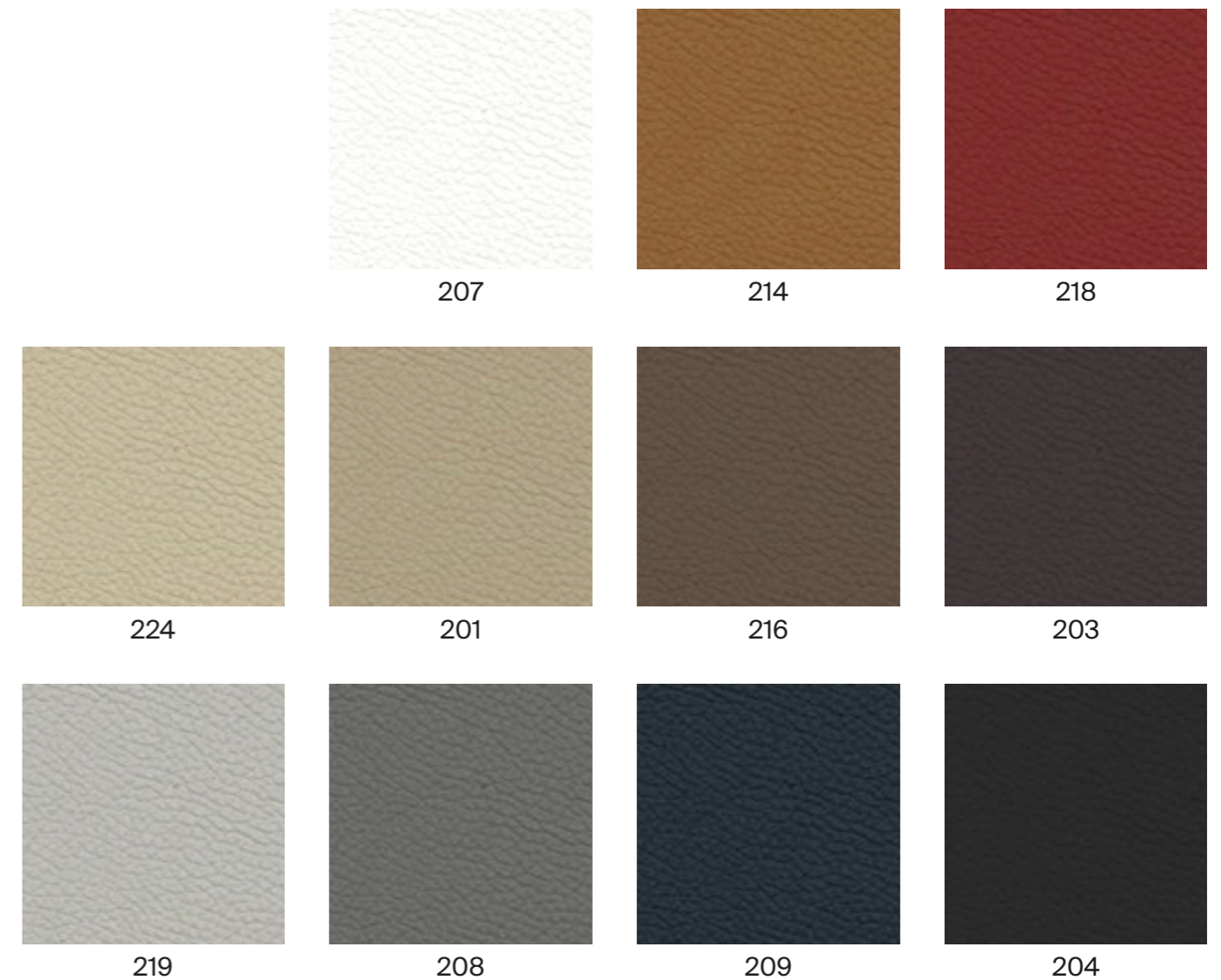
Wash with neutral soap and water or with a cleaning product for leather.

***Batch to batch variations may occur within commercial tolerances.

Note:

- The real colours and tones of the fabrics may differ from the digital image due to the scan process and the colour calibration of the different screens. Always request a real leather sample before ordering.

- Consult our Fabric and Leather Matrix to know about the availability of this material by product line.



G11 - LEATHER

TECHNICAL DATA

Composition:

Cow leather.

Light fastness:

≥5, UNI EN ISO 105B02.

Fastness to rubbing:

Wet ≥4 (80 cycles).

Dry ≥4 (500 cycles).

Perspiration ≥4 (50 cycles), UNI EN ISO 11640 - 11641.

Tear strength:

≥20N, EN ISO 3377-1.

Determination of PH:

≥3,5 ≤0,7 EN ISO 4045.

Adhesion of the finish:

≥2,5N / 10mm, UNI EN ISO 11644.

Determination of dry flex resistance:

>50.000 cycles, UNI EN ISO 5402-1.

Flammability:

Ignition source 0 (cigarette)

Ignition source 1 (match), BS 5852-1:79.

Thickness:

0,9 - 1,1mm

Average surface:

4,8 - 5,0m²

Maintenance:

Wash with neutral soap and water or with a cleaning product for leather.

***Batch to batch variations may occur within commercial tolerances.

Note:

- The real colours and tones of the fabrics may differ from the digital image due to the scan process and the colour calibration of the different screens. Always request a real leather sample before ordering.

- Consult our Fabric and Leather Matrix to know about the availability of this material by product line.

